

Kofax OmniPage Server

The right solution for reliable,
high-volume, server-based
document conversions



Robust, Versatile and Cost-Effective OCR Solution

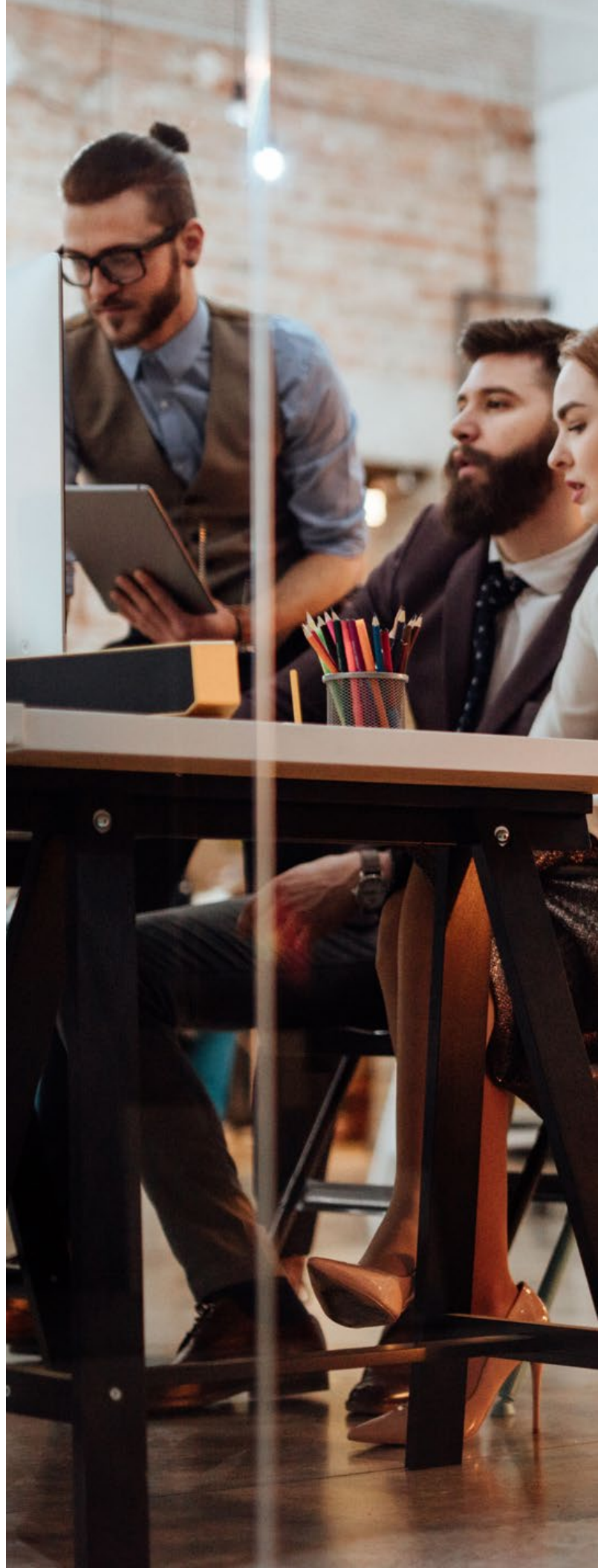
Kofax OmniPage® Server is a robust and versatile OCR solution for server-based, large volume document conversion. OmniPage Server provides a cost-effective solution for system integrators and software developers to easily add document conversion capabilities into custom applications, providing a server-ready OCR solution that doesn't require labor-intensive programming. Using a simple-to-use API, they can integrate OCR functions into client applications, which supports virtually all operating system platforms for desktop computers and mobile devices.

OmniPage Server also enables organizations and their IT personnel to deploy common OCR functionalities for employees or selected workgroups. This empowers office workers to accomplish their recurring mid- or high-volume document conversion tasks using a web browser or shared network folders.

Once OmniPage Server is configured, users don't need to install or launch separate client applications to convert their documents. Simply use a web-based application to upload documents, set conversion settings and download the converted files via the same webpage. OmniPage Server can also be configured to enable watched folder scenarios. Users can feed network folders with scanned documents and the converted, editable and searchable files are automatically placed into output subfolders for archive or additional use in the document workflow.

OmniPage Server can automatically and accurately convert from the most popular formats, such as TIFF, JPEG and PDF, into a wide range of word processing, spreadsheet and other document types such as DOCX, XLSX, PPTX, RTF, TXT, text PDF, searchable PDF and PDF/A, and can recognize 127 languages. Employing the market-leading OmniPage OCR engine provides fast batch conversion of thousands of documents, thanks to its scalability and parallel processing.

KOFAX





How OmniPage Server Works

OmniPage Server is a part of a product suite which includes: server applications, server API, a folder watcher and a conversion client. All user interface components are web based.

- Set up and run OmniPage Server applications: Server Master, Admin Console, Processing Workers, Folder Watcher, and Conversion Client
- Server Master manages job queues from client applications and watched folders
- Processing Workers, once set up can run on any machine on the intranet, and pull jobs from the queue to provide document conversion functionality with computing scalability



Key Features

Developer features

- Simple API for developers to add OCR to applications
- Supports common conversion workflows and template-based form processing
- HTTP(S) supports connections from virtually any platform
- Receive a URL link to download result files
- Compiled sample program with source code is available that developers can directly use in their own applications

Administrator features

Use the Installer Assistant to easily install and configure the OmniPage Server components on a single server, or distributed across multiple servers for high availability, higher volume scenarios. Cloud hosting optional with Amazon Web Services or Microsoft Azure.

Admin Console features

- View job statistics
- Cumulative page counting from all Processing Workers
- User account management
- Server performance monitoring
- Error reporting and handling
- Folder Watcher: The Folder Watcher System Configuration Editor helps the administrator create and configure the Folder Watcher
- Set up the root watched folder
- Set up flexible workflows for each subfolder

User features

- Watched folders: Manually drop input documents into watched input subfolders. Get conversion results from output subfolders.
- Conversion Client: Upload images to the server. Select conversion settings and output format. Receive download links for result files.

To discover more about Kofax OmniPage Server, visit www.kofax.com/omnipage.

System Requirements

Supported operating systems

- Windows Server 2012, 2012 R2 or 2016. Server Core (without UI) installations are not supported. The processing workers can be installed also on Windows 8.1 (x64), Windows 10 (x64).

Minimum hardware requirements

- 20 GB free disk space
- 8 GB RAM
- Quad-Core CPU

For storage

- Minimum size requirement is 100 GB

Installation prerequisites

- Microsoft .NET Framework 4.5 or higher
- Microsoft Internet Information Services version 7.5 or higher
- Microsoft SQL Server/SQL Server Express 2012 or newer required for Advanced Install mode

Work Like Tomorrow.™