

# **Kofax Capture**

Ascent® 7.0 Release Script for  
IBM DB2 Content Manager Enterprise 8.3-8.4  
Release Notes



© 1994 - 2010 Kofax, Inc., 15211 Laguna Canyon Road, Irvine, California 92618, U.S.A. All rights reserved. Use is subject to license terms.

Third-party software is copyrighted and licensed from Kofax's suppliers. This product includes software developed by the Apache Software Foundation (<http://www.apache.org/>).

This product is protected by U.S. Patent No. 6,370,277.

THIS SOFTWARE CONTAINS CONFIDENTIAL INFORMATION AND TRADE SECRETS OF KOFAX, INC. USE, DISCLOSURE OR REPRODUCTION IS PROHIBITED WITHOUT THE PRIOR EXPRESS WRITTEN PERMISSION OF KOFAX, INC.

Kofax, the Kofax logo, Ascent Capture, the Ascent Capture logo, and Ascent are trademarks or registered trademarks of Kofax, Inc. in the U.S. and other countries.

DB2 Content Manager is a registered trademark of IBM Corporation.

Microsoft and Windows are registered trademarks of Microsoft Corporation.

All other product names and logos are trade and service marks of their respective companies.

U.S. Government Rights Commercial software. Government users are subject to the Kofax, Inc. standard license agreement and applicable provisions of the FAR and its supplements.

You agree that you do not intend to and will not, directly or indirectly, export or transmit the Software or related documentation and technical data to any country to which such export or transmission is restricted by any applicable U.S. regulation or statute, without the prior written consent, if required, of the Bureau of Export Administration of the U.S. Department of Commerce, or such other governmental entity as may have jurisdiction over such export or transmission. You represent and warrant that you are not located in, under the control of, or a national or resident of any such country.

DOCUMENTATION IS PROVIDED "AS IS" AND ALL EXPRESS OR IMPLIED CONDITIONS, REPRESENTATIONS AND WARRANTIES, INCLUDING ANY IMPLIED WARRANTY OF MERCHANTABILITY, FITNESS FOR A PARTICULAR PURPOSE OR NON-INFRINGEMENT, ARE DISCLAIMED, EXCEPT TO THE EXTENT THAT SUCH DISCLAIMERS ARE HELD TO BE LEGALLY INVALID.

---

# Contents

Introduction .....	1
Additional Documentation .....	1
System Requirements .....	2
IBM DB2 Content Manager Enterprise Server Support .....	2
IBM Content Manager for iSeries Database .....	2
Client Operating System Support .....	2
Administration and Release Workstations - Additional Requirements .....	3
Source Code .....	3
Source Code and the Information Integrator for Content (II4C) Connector .....	4
Features .....	5
Ascent Capture Values / Content Manager Attributes .....	5
Ascent Capture Value {Document GUID} .....	5
Child Components Attribute Supported .....	5
Release Script Information Interchange Supported .....	5
Dynamic Item Types .....	5
Access Control / Permission Support .....	5
Multiple Values .....	6
SecurityBoost Supported .....	6
Folder Searching .....	6
Processes and Priorities .....	6
Online Help Available for Release Setup .....	6
Image Support .....	7
Kofax PDF Support .....	7
Adobe Acrobat Capture PDF Support .....	7
OCR Full Text Support .....	7
eDocument Support .....	7
Additional Information .....	8
Unsupported Ascent Capture Features .....	8
File Name Retention .....	8
{Index Operator's Station ID} Ascent Capture Value .....	8
eDocument Names Not Preserved at Release .....	8
Text Searching Options .....	9
Images and eDocuments .....	9
OCR Full Text .....	9
PDF Documents .....	9
Multi-value Separator Option .....	10
Searching for Folder Child Component Attributes .....	10

Sharing Data Among Release Scripts .....	10
Invalid Characters .....	11
OCR Full Text Options .....	12
Kofax PDF Options .....	13
Adobe Acrobat Capture Options .....	14
Operating System Requirements for Ascent Capture .....	14
Adobe Acrobat Capture and the Ascent Capture Release Workstation Installations .....	14
Workflow Steps .....	14
Multipage TIFFs .....	15
Releasing from Multiple Ascent Capture Standalone Workstations .....	15
Re-releasing Documents in Error .....	15
Invalid Watched Folders .....	15
Installing the Release Script .....	16
Important Note About Installation .....	16
Installation Instructions .....	16
Upgrading the Release Script .....	17
Important Note About Upgrade .....	17
Upgrading to Ascent 7.0 Release Script for IBM DB2 Content Manager for Enterprise ...	17
Upgrade Instructions .....	17
Application Maintenance .....	18
Repairing the Release Script .....	18
Removing the Release Script .....	19
Logging on to the Release Script .....	20
Setting Up the Release Script .....	23
Document Settings Tab .....	23
Folder Settings Tab .....	24
Document Routing Tab .....	25
Image Format Tab .....	26
General Settings Tab .....	27
Publishing a Batch Class .....	28
Releasing Batches .....	29
Known Problems .....	30
Issues with CM Decimal Attribute .....	30
Unexpected Behavior with Child Component Attributes .....	30
Ascent Value {Document Count} .....	30
Online Help Documentation - Ascent Value Data Types .....	30
FLOAT and REAL Data Types .....	31
Problems When Installing on Windows XP .....	31
Problems When Uninstalling the Release Script .....	31
Required BLOB and CLOB Attributes Not Supported .....	31
Releasing PDF Documents Using Ascent Capture Multiple Release Feature .....	31
MIME Types Must Exist in Content Manager .....	32
User-Defined Ranges for Document Attribute Values .....	32
Releasing Single Page TIFFs .....	33

Releasing Date Fields .....	33
Releasing eDocuments with 0 Bytes .....	33
Scanning Non-Image Documents .....	34
Upper ASCII Character Limitations .....	34
Releasing Documents Using Ascent Capture Multiple Release Feature .....	34
Make Documents Text Searchable Option .....	34
Using the Dynamic Item Types Feature with Child Component Attributes .....	35
Dynamic Process .....	35
Using NULL Values .....	35
Minimum Cardinality Not Met .....	36
Required Child Component Attributes and Minimum Cardinality of Zero .....	37
Time Stamp Data Type Must Have a Value .....	37
“Unable to Check Out Item” Error .....	37
Linking Only Child Component Attributes .....	37
Appendix A – Data Type Compatibility .....	38
Ascent Value Data Types .....	38
Ascent Capture Values .....	39
Ascent Capture Text Constants .....	39
Appendix B – Quick Reference for Releasing OCR Full Text Files .....	40
Appendix C – Kofax Technical Support .....	41



## Introduction

This document contains the release notes for the Ascent 7.0 Release Script for IBM DB2 Content Manager Enterprise, which supports DB2 Content Manager Enterprise Edition 8.3/8.4. This release script copies document images, OCR full text files, PDF documents, and eDocuments to permanent storage and writes document / index data to your DB2 Content Manager system.

Please read these notes carefully as they contain information not included in the Ascent Capture Help or printed documentation.

## Additional Documentation

These release notes are a supplement to the following:

- *Ascent Capture Advanced Features Guide*
- Ascent Capture Release Notes
- *Getting Started with Ascent Capture* guide
- *Installation Guide for Ascent Capture and Ascent Capture Internet Server*
- *Learning Ascent Capture* guide
- Help provided from any of the Ascent Capture modules
- Help provided with the Ascent 7.0 Release Script for IBM DB2 Content Manager Enterprise

For more information about DB2 Content Manager Enterprise Edition or other IBM products, contact your IBM Content Manager representative or refer to the documentation that came with your DB2 Content Manager Enterprise Edition product.

---

**Tip** For additional information about Kofax products, visit our Web site at [www.kofax.com](http://www.kofax.com) and go to the Technical Support pages. The Technical Support Web pages provide product-specific information, such as current revision levels, the latest drivers and software patches, technical tips, and a searchable knowledgebase. In addition, updates to product documentation (if any) are available from these pages.

---

## System Requirements

The Ascent 7.0 Release Script for IBM DB2 Content Manager Enterprise requires the following components to be installed prior to installing this release script.

### IBM DB2 Content Manager Enterprise Server Support

The Ascent 7.0 Release Script for IBM DB2 Content Manager Enterprise requires the following network server components:

- DB2 Content Manager Enterprise Edition 8.3/8.4 (Windows, AIX)
- DB2 Content Manager supported database

This release script was tested with DB2 Content Manager Enterprise 8.3/8.4 in a Windows environment, using:

- DB2 Universal Database 8.2 with Fix Pack 1, WebSphere Application Server version 5.1.1, DB2 Net Search Extender 8.2, and DB2 Information Integrator for Content 8.3 (DB2 Content Manager 8 Connector).
- DB2 Content Manager Enterprise 8.4.

### IBM Content Manager for iSeries Database

IBM has modified the IBM Content Manager for iSeries database to be compatible with IBM DB2 Content Manager Enterprise Edition 8.3. For information on upgrading your IBM Content Manager for iSeries database, please contact your IBM Content Manager representative.

Kofax has tested the Ascent 7.0 Release Script for IBM DB2 Content Manager Enterprise 8.3/8.4 to release to the IBM Content Manager for iSeries database using IBM DB2 Connect Personal Edition for Content Manager 8.3, IBM DB2 Information Integrator for Content Manager 8.3, and IBM DB2 Content Manager 8.3 Enterprise Windows Client on a Windows XP Professional (with Service Pack 2) platform.

### Client Operating System Support

The Ascent 7.0 Release Script for IBM DB2 Content Manager Enterprise supports the following client operating systems:

- Windows 2000 Professional with Service Pack 4
- Windows 2000 Server with Service Pack 4
- Windows Server 2003 (Standard or Enterprise Edition), SP1, SP2
- Windows XP Professional with Service Pack 2

---

**Note** At the time of publishing these release notes, the Ascent 7.0 Release Script for IBM DB2 Content Manager Enterprise was certified with the Service Packs listed above.

---

## Administration and Release Workstations – Additional Requirements

The Ascent Capture Administration and Release workstations must have the following components installed:

- Ascent Capture 7.0, Ascent Capture 7.5, Kofax Capture 8, or Kofax Capture 9

For IBM DB2 Content Manager Enterprise Edition 8.3:

- DB2 Runtime Client 8.1 with Fix Pack 7A or DB2 Runtime Client 8.2 with Fix Pack 7A
- DB2 Content Manager Client for Windows 8.3 or DB2 Information Integrator for Content 8.3

For IBM DB2 Content Manager Enterprise Edition 8.4:

- IBM Data Server Runtime Client 9.5
- IBM DB2 Content Manager Enterprise Edition 9.5
- DB2 Information Integrator 8.4

## Source Code

The source code for the Ascent 7.0 Release Script for IBM DB2 Content Manager Enterprise is provided and it is located on the Ascent 7.0 Release Script for IBM DB2 Content Manager Enterprise installation CD in the IBM\CM8 folder. The source code can be opened, edited, and compiled in Visual Basic 6.0 with Service Pack 6.

### ► To modify the release script

- 1 Install the IBM DB2 Content Manager Enterprise release script. Refer to *Installing the Release Script* on page 16 for the installation instructions. When you install the Content Manager release script, you will install the required components referenced in the source code.
- 2 Open, make any desired modifications, and compile the Content Manager source code in Visual Basic.
- 3 Copy the newly created CMRel8\_v7.dll to the installation directory (for example, C:\Program Files\Ascent\CAP\IBM\CMRel8\_v7.dll). When you are prompted to replace the existing file, select “Yes.” You will need to repeat this procedure on each Administration and Release workstation that will be using the IBM DB2 Content Manager Enterprise release script. You may want to make a copy of the file for backup purposes, and store the copy in a safe location.

---

**Note** In order to successfully modify and compile the release script, development must occur on a workstation with the appropriate versions of Ascent Capture, CAPTools, and the IBM DB2 Content Manager Enterprise release script previously installed. To use the modified release script, you must replace the IBM DB2 Content Manager Enterprise release script CMRel8\_v7.dll with the modified version on the client workstation. If you receive an access denied error, you will need to close the Administration module.

---

Refer to the documentation that came with your DB2 Content Manager Enterprise Edition product and Visual Basic documentation for assistance.

## Source Code and the Information Integrator for Content (II4C) Connector

In order to compile the source code for Ascent 7.0 Release Script for IBM DB2 Content Manager Enterprise, the IBM DB2 Information Integrator for Content (II4C) connector must be installed to the default directory (for example, C:\Program Files\IBM). If you install the connector to a directory other than the default and attempt to compile the source code, you will receive the following error messages. (SPRs 00017130 and 00017513)

```
Fatal error C1083: Cannot open include file: 'DFException.hpp': No such file or directory.
```

```
Fatal error C1083: Cannot open include file: 'dkCollection.hpp': No such file or directory.
```

Note that the II4C needs to be installed as a "development client" in order to obtain the libraries that the connector references.

**Workaround:** The source code for the Ascent 7.0 Release Script for IBM DB2 Content Manager Enterprise references the absolute paths to the DB2 API applications. You will need to edit the KfxCM81 properties with the following:

- C/C++ settings: "Additional Include Directories" property must list the "include" directory of the IBM II4C (%ICMROOT%\include)
- Linker settings: "Additional Library Directories" property must list the "lib" directory of the IBM II4C (%ICMROOT%\lib)

Then, re-compile the source code.

## Features

This section contains information about features provided with the Ascent 7.0 Release Script for IBM DB2 Content Manager Enterprise.

### Ascent Capture Values / Content Manager Attributes

The Ascent 7.0 Release Script for IBM DB2 Content Manager Enterprise provides an easy-to-use interface for linking Ascent Capture Values to Content Manager document attributes and folder attributes. Examples of Ascent Values include Document index fields, Folder index fields, Batch fields, Ascent Capture Values, and Text Constants. The names of “required” Content Manager attributes within a document class or folder class are marked with an asterisk (\*), giving you a visual indicator that certain fields must be linked.

### Ascent Capture Value {Document GUID}

The Ascent Capture Value {Document GUID} is a new value that can be used for index fields and release values. This Ascent Capture value is a type of document ID that is unique across the central site and all remote sites that comprise of an Ascent Capture installation. The Document GUID is the concatenation of the Batch GUID and the document ID number. For example, a Batch GUID of {D3C58EE2-5627-443b-BBFA-EE7A5790482A} and a document ID of 123 will yield {D3C58EE2-5627-443b-BBFA-EE7A5790482A} 123 as the Document GUID.

### Child Components Attribute Supported

The Ascent 7.0 Release Script for IBM DB2 Content Manager Enterprise supports attributes belonging to the first level child components for folder attributes and document attributes. The display format is:

*{<Child Component name>}: <Attribute name>*

### Release Script Information Interchange Supported

The Ascent 7.0 Release Script for IBM DB2 Content Manager Enterprise supports the Ascent Capture Release Script Information Interchange feature. This feature allows the release scripts to pass information to other release scripts.

Refer to *Sharing Data Among Release Scripts* on page 10 for more information.

### Dynamic Item Types

The Ascent 7.0 Release Script for IBM DB2 Content Manager Enterprise allows you to dynamically assign an item type to your released folders or documents at release time.

### Access Control / Permission Support

The Ascent 7.0 Release Script for IBM DB2 Content Manager Enterprise will only allow the users to view the item types that they have permission to view.

## Multiple Values

The Ascent 7.0 Release Script for IBM DB2 Content Manager Enterprise supports properties that contain multiple values. You can specify the desired delimiter to separate the values when entering multiple values for the child component attributes, dynamic processes, and dynamic priorities using the Multi-value separator option as specified on the General Settings tab. For example, if you specified a single semi-colon (;) delimiter for the Multi-value separator option, you would enter the following:

appl e; orange; pear

No spaces should appear between the entries to separate the values.

Refer to *Multi-value Separator Option* on page 10 for more information.

## SecurityBoost Supported

The Ascent 7.0 Release Script for IBM DB2 Content Manager Enterprise supports the Ascent Capture SecurityBoost feature. The SecurityBoost feature allows you to enhance Ascent Capture security for systems using Windows XP and Windows 2000.

Refer to your Ascent Capture Help for more information about the SecurityBoost feature. (Ascent Capture Help keyword: *SecurityBoost > about*)

## Folder Searching

The Ascent 7.0 Release Script for IBM DB2 Content Manager Enterprise can search the entire DB2 Content Manager repository for the first folder in the folder hierarchy defined in the Folder Settings tab at release setup. If a match is found, then the first folder will be used to find the child folder hierarchy.

## Processes and Priorities

The Ascent 7.0 Release Script for IBM DB2 Content Manager Enterprise allows you to specify whether to route your released documents or to route the parent folder for the current document to either statically or dynamically assigned IBM DB2 Content Manager processes. In addition, the release script allows you to statically or dynamically assign priorities for the processes.

## Online Help Available for Release Setup

The Ascent 7.0 Release Script for IBM DB2 Content Manager Enterprise Help is installed with your release script. It is available from the Administration module when you are setting up your release script. You can click the Help button from the Ascent 7.0 for IBM DB2 Content Manager Enterprise 8.3/8.4 – Release Setup dialog box to display help information about release options.

## Image Support

This release script supports the following file formats / compression formats:

- Multipage TIFF – Group 4 Compression
- Multipage TIFF – Uncompressed Image Format
- Single page TIFF – Group 4 Compression
- Single page TIFF – Uncompressed Image Format
- MO:DCA
- JPG – JPEG Compression
- PCX – PackBytes Compression
- Kofax PDF
- Adobe PDF from TIFF
- Adobe PDF from JPEG
- Adobe PDF from PCX

### Kofax PDF Support

With the Ascent 7.0 Release Script for IBM DB2 Content Manager Enterprise, you can release Kofax PDF documents into your DB2 Content Manager system. Kofax PDF is bundled with Ascent Capture and does not require additional software implementation. Kofax PDF documents can be saved in the following output types:

- PDF Image Only
- PDF Image + Text

Refer to *Kofax PDF Options* on page 13 for more information about Kofax PDF documents.

### Adobe Acrobat Capture PDF Support

The Ascent 7.0 Release Script for IBM DB2 Content Manager Enterprise supports releasing Adobe Acrobat Capture PDF documents into your DB2 Content Manager system. The software is provided by Adobe Acrobat Capture and is not included with the Ascent Capture product. To release Adobe PDF documents, you must install the Adobe® Acrobat Capture® 3.0 Clustered or Personal Edition software.

Refer to *Adobe Acrobat Capture Options* on page 14 for more information about Adobe Acrobat Capture PDF documents.

### OCR Full Text Support

With the Ascent 7.0 Release Script for IBM DB2 Content Manager Enterprise, you can release documents processed through the Ascent Capture OCR Full Text module into your DB2 Content Manager system.

Refer to *OCR Full Text Options* on page 12 for more information about OCR full text files.

### eDocument Support

With the Ascent 7.0 Release Script for IBM DB2 Content Manager Enterprise, you do not need to limit your batches to image files. eDocuments are supported into your DB2 Content Manager system.

## Additional Information

This section contains additional information about the Ascent 7.0 Release Script for IBM DB2 Content Manager Enterprise.

### Unsupported Ascent Capture Features

Ascent 7.0 Release Script for IBM DB2 Content Manager Enterprise does not support the following Ascent Capture feature.

#### File Name Retention

This release script does not support file name retention. Therefore, the original imported file name will not be retained and the default numeric name will be used.

If you have enabled the “Use the original file name of image and eDocument files” check box in the Ascent Capture Release Properties dialog box and you release a batch in Content Manager, the release will fail with the following error message. (SPR 30293)

```
The specified file does not exist.
```

In addition, if you set the “SupportsOriginalFileName” property to “True” (SupportsOriginalFileName=True) in IBM DB2 Content Manager and you release a batch, the release will fail with the same error message.

Refer to your Ascent Capture Help for more information about retention of file names (Ascent Capture Help keyword: *Release Properties dialog box*).

---

**Tip** The Ascent Capture Value “{First Page Original File Name}” allows you to retain the original file name for the first page of a document. This value can be linked to Content Manager attributes that support Ascent Values. Notice that the Content Manager attribute type must be able to accept all the characters that are part of the original file name and must not exceed the defined length or release may fail.

---

### {Index Operator’s Station ID} Ascent Capture Value

The Ascent Capture Value {Index Operator’s Station ID} has been deprecated, and replaced by {Validation Operator’s Station ID}. It is strongly recommended that you use {Validation Operator’s Station ID} instead.

### eDocument Names Not Preserved at Release

Ascent Capture releases eDocuments in the same manner as images. This means that the original name of the eDocument is modified and becomes a part of the image-naming scheme. Note, however, that the original eDocument file extension is preserved and used in the final name.

## Text Searching Options

The following sections describe what is required to make your documents text-searchable for images, eDocuments, OCR full text files, and PDF documents.

### Images and eDocuments

The “Make documents text-searchable” check box as specified on the General Settings tab, enables the text-searchable feature.

To make your documents text-searchable, you must install the IBM Net Search Extender (NSE) on your server. In addition, the item type should be set to text searchable and the ICMBASETEXT part must be included in the document parts.

NSE is formerly known as the Text Information Extender (TIE) in previous versions.

NSE text indexing supports the following image formats:

- Excel
- HTML
- PDF
- Text
- Word
- XML

Refer to the documentation that came with your DB2 Content Manager Enterprise Edition product for more information about setting up item type parts using NSE.

### OCR Full Text

To release OCR Full text files with the “Make documents text-searchable” option enabled, the selected item type must contain the ICMBASE and ICMBASETEXT parts. The item type should be set to text searchable. To release OCR full text files as part of the image, a semantic type named “KofaxOCR” must be created on the Content Manager server. (SPR 30343)

Refer to the documentation that came with your DB2 Content Manager Enterprise Edition product for more information about setting up item type parts using NSE.

### PDF Documents

To release PDF documents with the “Make documents text-searchable” option enabled, the selected item type must contain the ICMBASETEXT parts. The item type should be set to text searchable and contain the ICMfetchFilter. (IBM PMR 93948; Kofax SPR 0457)

Refer to the documentation that came with your DB2 Content Manager Enterprise Edition product for more information about setting up item type parts using NSE.

## Multi-value Separator Option

The Multi-value separator option as specified on the General Settings tab, allows you to enter only valid printable ASCII characters. This option cannot contain the following characters:

- Carriage return
- Escape
- New line
- Space
- Tab

---

**Warning** The multi-value separator should not be part of your value. For example, if you specify a period (.) as one of your values and you specify the period as the Multi-value separator option, the release script will assume the value is the separator.

---

## Searching for Folder Child Component Attributes

This release script does not support searching for folder child component attributes. Therefore, if you perform a search based on the root attributes only, the values for the child components will be lost when the search routine finds an existing folder. This occurs because the existing folder is not updated at release. To avoid this, you will need to ensure that new folders are created at release time. You can do the following:

- Use root attribute values that are unique and do not already apply to existing folders in the DB2 Content Manager system.
- Clear all the Search check boxes, which will force the release script to create a new folder.

## Sharing Data Among Release Scripts

The Ascent Capture Release Script Information Interchange feature is useful when more than one release script has been configured for a particular batch class and document class combination.

The sharing of information is accomplished by allowing the release scripts to pass information to other release scripts. The Ascent Capture Value {Repository Document ID} is used to store and retrieve the RepositoryDocumentID that will be used by the first invoked release script. Therefore, the first release script that runs can set this value, and subsequent release scripts can read the same value.

Notice that when you are passing the RepositoryDocumentID information to a different release script, the release script must exist within the same document class using multiple release. In addition, the release script that is passing the RepositoryDocumentID information must be placed first in the list on the Release Scripts dialog box. For example:

```
IBM DB2 Content Manager Enterprise 8.3/8.4
Ascent Capture Text
```

Only the first release script can set the RepositoryDocumentID value. Subsequent release scripts can only read this value.

Refer to your Ascent Capture Help for more information about configuring the RepositoryDocumentID. You can display Ascent Capture Help from the Help menu available from any Ascent Capture module. Alternatively, you can click Start | Programs | Ascent Capture | Ascent Capture Help.

## Invalid Characters

The Ascent 7.0 Release Script for IBM DB2 Content Manager Enterprise will not allow the following characters at validation. Content Manager data types are validated during release setup and release.

**Table 1. Invalid Characters**

Content Manager CHAR and VARCHAR Data Types	Invalid Characters	
Alphabetic	0 - 9 Ampersand (&) Apostrophe (') Asterisk (*) At sign (@) Backslash (\) Braces ({}) Brackets ([]) Circumflex (^) Closing Parenthesis ) Colon (:) Comma (,) Dash (-) Dollar sign (\$) Double quotation marks (""") Equal sign (=) Exclamation point (!)	Grave accent (`) Greater than sign (>) Less than sign (<) Number sign (#) Opening Parenthesis ( Parentheses () Percent sign (%) Period (.) Pipe ( ) Plus sign (+) Question mark (?) Quotation marks ("") Semicolon (;) Slash mark (/) Space character ( ) Tilde (~) Underscore (_)
Numeric	Any character outside of 0 - 9.	
Alphanumeric	Ampersand (&) Apostrophe (') Asterisk (*) At sign (@) Backslash (\) Braces ({}) Brackets ([]) Circumflex (^) Closing Parenthesis ) Colon (:) Comma (,) Dash (-) Dollar sign (\$) Equal sign (=) Exclamation point (!) Grave accent (`)	Greater than sign (>) Less than sign (<) Number sign (#) Opening Parenthesis ( Parentheses () Percent sign (%) Period (.) Pipe ( ) Plus sign (+) Question mark (?) Quotation marks ("") Semicolon (;) Slash mark (/) Space character ( ) Tilde (~) Underscore (_)
Extended Alphanumeric	Backslash (\) Braces ({}) Brackets ([])	Grave accent (`) Tilde (~)
Other	No data type validation is performed.	

## OCR Full Text Options

This release script allows you to select OCR full text options at release setup time. For example, you can specify that you want to release OCR full text files as part of the image or as the base of a released document. The OCR Full Text options for the release script are available on the General Settings tab.

Refer to the IBM DB2 Content Manager Enterprise Help for details about how OCR full text files and non-image files are released to the DB2 Content Manager system (Help keyword: *File format combinations*).

---

**Note** The options for releasing OCR full text files require various Content Manager item type settings. Refer to *Appendix B – Quick Reference for Releasing OCR Full Text Files* on page 40 for a quick reference chart of the item type requirements for releasing OCR full text files. The chart also includes a description of how the document parts are stored in Content Manager, based on the OCR full text options.

---

To release OCR full text files, you must also enable Ascent Capture OCR full text processing in your applicable document class and add the OCR Full Text module to your applicable document class / batch class.

► **To enable OCR full text processing for a document class**

- 1 From the Create Document Class dialog box or Document Class Properties dialog box, select the OCR tab.
- 2 Check the Enable OCR full text check box to enable OCR full text processing for the document class.
- 3 Click Apply to save your settings without closing the dialog box. Click OK to save your settings and close the dialog box.

► **To add the OCR Full Text module to a batch class**

- 1 From the Create Batch Class dialog box or Batch Class Properties dialog box, select the Queues tab.
- 2 Select OCR Full Text from the list of Available Queues, and click Add.
- 3 Click Apply to save your settings without closing the dialog box. Click OK to save your settings and close the dialog box.

For more information about OCR full text processing, refer to the *Getting Started with Ascent Capture* guide.

## Kofax PDF Options

To release Kofax PDF documents, you must enable Ascent Capture Kofax PDF generation in your applicable document class and add the Kofax PDF Generator module to your applicable batch class.

Refer to the Content Manager Help for details about how Kofax PDF documents and non-image files are released to the DB2 Content Manager system repository (Help keyword: *File format combinations*).

### ► To add the Kofax PDF Generator module to a batch class

- 1 From the Create Batch Class dialog box or Batch Class Properties dialog box, select the Queues tab.
- 2 Select PDF Generator from the list of Available Queues, and click Add.
- 3 Click Apply to save your settings without closing the dialog box. Click OK to save your settings and close the dialog box.

### ► To enable Kofax PDF generation for a document class

- 1 From the Create Document Class dialog box or Document Class Properties dialog box, select the PDF tab.
- 2 Check the Enable Kofax PDF generation check box to enable Kofax PDF processing for the document class.
- 3 Click Apply to save your settings without closing the dialog box. Click OK to save your settings and close the dialog box.

For more information about the Kofax PDF Generator module, refer to the *Getting Started with Ascent Capture* guide.

## Adobe Acrobat Capture Options

The Ascent 7.0 Release Script for IBM DB2 Content Manager Enterprise supports Adobe Acrobat Capture. This section contains information related to using Adobe Acrobat Capture or your Adobe PDF images.

For additional details about creating Adobe Acrobat Capture PDF documents, refer to the documentation that came with your Adobe Acrobat Capture product.

Refer to the Content Manager Help for details about how Adobe Acrobat Capture PDF documents and non-image files are released to the DB2 Content Manager system (Help keyword: *File format combinations*).

### Operating System Requirements for Ascent Capture

To release Adobe PDF documents, your Ascent Capture Administration and Release workstations must be running on Windows XP or Windows 2000 computers. Windows 95, Windows 98, Windows Me, and Windows NT are not supported operating systems for Ascent Capture.

### Adobe Acrobat Capture and the Ascent Capture Release Workstation Installations

During the conversion process, communication must occur between Adobe Acrobat Capture and the Ascent Capture Release module. However, due to timing conflicts, Adobe Acrobat Capture and Ascent Capture cannot be run at the same time on a workstation. Therefore, Adobe Acrobat Capture and Ascent Capture must be installed on separate workstations on the same LAN.

### Workflow Steps

Adobe Acrobat Capture lets you create your own workflow or use one of the predefined workflows. Note the following:

For complete image conversion for Formatted Text & Graphics or Searchable Image page content, a basic Adobe Acrobat Capture workflow needs to contain at least four steps, in the following order:

- 1 Capture Image
- 2 Bind Pages
- 3 Export to PDF
- 4 Store File (PDF)

For complete image conversion for Image Only page content, the Adobe Acrobat Capture workflow needs to be called "PDF Image Only" and contain at least three steps, in the following order:

- 1 Convert Image to PDF
- 2 Combine PDFs
- 3 Store File (PDF)

---

**Note** When creating workflows, do not include manual steps such as Quick Fix Page, Review Document, and Zone Images. If you do, Adobe Acrobat Capture will stop running when it encounters any of these steps and require manual processing by the user. This kind of workflow is not suitable for Ascent Capture Release because it disrupts the automated process of releasing Adobe PDF documents.

---

### **Multipage TIFFs**

If you are releasing multipage TIFFs, you must use the Split Multipage TIF step in your Adobe Acrobat Capture workflow.

### **Releasing from Multiple Ascent Capture Standalone Workstations**

If you use multiple Ascent Capture standalone workstations and one Adobe Acrobat Capture hub, you must create unique Adobe Acrobat Capture “workflows” and “watched folders” for each Ascent Capture standalone workstation. This is because Adobe Acrobat Capture uses Ascent Capture document IDs for its document-naming scheme. Since standalone Ascent Capture document IDs may not be unique, the document names could conflict in Adobe Acrobat Capture and cause the release process to fail.

### **Re-releasing Documents in Error**

If an Adobe Acrobat Capture error occurs during the release process, you must clear your Adobe Acrobat Capture finished documents and cancel any hung documents before re-releasing the same documents in Ascent Capture.

### **Invalid Watched Folders**

If you attempt to release documents to an invalid Adobe Acrobat Capture watched folder, the documents will be rejected. To cancel the release, click Cancel on the Ascent Capture PDF Release dialog box displayed at the Release workstation. The Cancel button will automatically cancel the Adobe Acrobat Capture documents.

## Installing the Release Script

You can install the Ascent 7.0 Release Script for IBM DB2 Content Manager Enterprise on an Ascent Capture client workstation or standalone workstation.

### Important Note About Installation

To install the Ascent 7.0 Release Script for IBM DB2 Content Manager Enterprise, you must have Windows administrator privileges. If you do not have administrator privileges and install this release script, you may receive error messages and several of the files may not install correctly.

Before you install the Ascent 7.0 Release Script for IBM DB2 Content Manager Enterprise, refer to *System Requirements* on page 2 for information about installation requirements.

### Installation Instructions

Use the following instructions to install the Ascent 7.0 Release Script for IBM DB2 Content Manager Enterprise.

#### ► To install the release script

- 1 Insert your Ascent 7.0 Release Script for IBM DB2 Content Manager Enterprise installation CD into your CD drive.
- 2 From your Windows task bar, select Start | Run, browse to the IBM\CM8 folder on the CD, and run Setup.exe. The installation program will start.
- 3 Follow the instructions on the screen to install the release script.
- 4 When the installation is complete, a message will display that indicates the release script was successfully installed.

---

**Note** Installing the release script automatically registers it with Ascent Capture.

---

- 5 Repeat this procedure on all Administration and Release workstations that will use the Ascent 7.0 Release Script for IBM DB2 Content Manager Enterprise.

## Upgrading the Release Script

If you are currently using Ascent Capture for Content Manager version 5.51, 5.61, 5.71, Ascent Capture 6.0 Release Script for IBM Content Manager, Ascent Capture 6.05 Release Script for IBM Content Manager, or Ascent Capture 6.1 Release Script for IBM Content Manager, you can upgrade to the Ascent 7.0 Release Script for IBM DB2 Content Manager Enterprise, if desired.

### Important Note About Upgrade

To upgrade to the Ascent 7.0 Release Script for IBM DB2 Content Manager Enterprise you must have Windows administrator privileges. If you do not have administrator privileges and upgrade this release script, you may receive error messages and several of the files may not upgrade correctly.

#### Upgrading to Ascent 7.0 Release Script for IBM DB2 Content Manager for Enterprise

Previous versions of the Content Manager release script cannot coexist with Ascent 7.0 Release Script for IBM DB2 Content Manager for Enterprise. Therefore, once you install this release script, the previous versions of the Content Manager release script will no longer be able to release documents.

### Upgrade Instructions

Use the following instructions to upgrade to the Ascent 7.0 Release Script for IBM DB2 Content Manager Enterprise.

#### ► To upgrade the release script

- 1 Release any existing batches associated with the release scripts. For more information see *Releasing Batches* on page 29.
- 2 From the Definitions panel in the Administration module, select the Batch class tab and right-click the applicable document class associated with the release script. (Expand the batch class item to select associated document classes.) A context menu will display.
- 3 From the context menu, select “Release Scripts.” The Release Scripts dialog box will display.
- 4 From the Release Scripts dialog box, ensure that the older version of the Content Manager release script is selected from the list of Assigned Release Scripts (on the right-hand side of the screen). Then, select the “IBM DB2 Content Manager Enterprise 8.3/8.4” release script from the list of Available Release Scripts (on the left-hand side of the screen).
- 5 Click Upgrade. When you are prompted to confirm that you want to upgrade, click Yes.

Once you have upgraded, you should log on to the IBM DB2 Content Manager Enterprise release script and verify that all of the settings are correct.

Before you can use the upgraded release script, you must republish the associated batch class. Refer to *Publishing a Batch Class* on page 28 for instructions.

---

**Note** It is recommended that you run some sample batches through the system to test the operation of the release script.

---

## Application Maintenance

This section describes how to repair and remove the Ascent 7.0 Release Script for IBM DB2 Content Manager Enterprise.

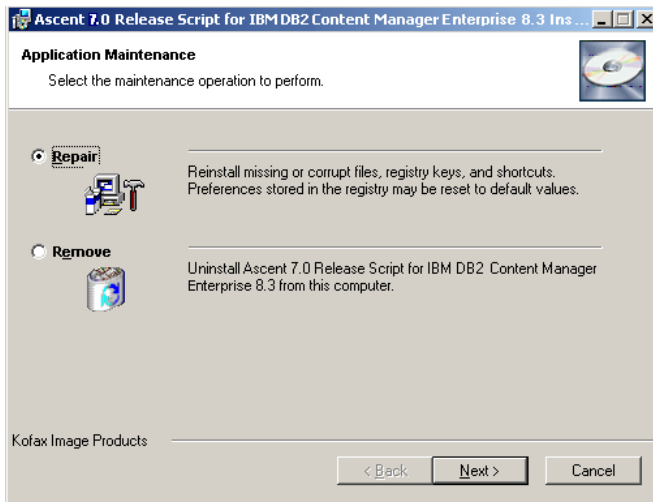


Figure 1. Application Maintenance Dialog Box

### Repairing the Release Script

The Repair option replaces missing, renamed, or deleted files.

#### ► To repair the release script

- 1 Insert your Ascent 7.0 Release Script for IBM DB2 Content Manager Enterprise installation CD into your CD drive.
- 2 From your Windows task bar, select Start | Run, browse to the IBM\CM8 folder on the CD, and run Setup.exe.
- 3 Setup will detect an existing installation and the Application Maintenance dialog box will display, as shown in Figure 1.
- 4 From the Application Maintenance dialog box, select “Repair” and then click Next.
- 5 Follow the instructions on the screen to repair the release script.
- 6 When the repair is complete, a message will display that indicates the release script was successfully installed.

## Removing the Release Script

The Remove option will delete the release script.

### ► To remove the release script

- 1 Insert your Ascent 7.0 Release Script for IBM DB2 Content Manager Enterprise installation CD into your drive.
- 2 From your Windows task bar, select Start | Run, browse to the IBM\CM8 folder on the CD, and run Setup.exe.
- 3 Setup will detect an existing installation and the Application Maintenance dialog box will display, Figure 1 on page 18.
- 4 From the Application Maintenance dialog box, select “Remove” and then click Next.
- 5 Follow the instructions on the screen to delete the release script.
- 6 When the uninstallation is complete, a message will display that indicates the release script was successfully uninstalled.

Alternatively, you can use the Add or Remove Programs utility from the Windows Control Panel to uninstall the IBM DB2 Content Manager Enterprise release script.

Refer to your Microsoft documentation for more information about the Add or Remove Programs utility.

Refer to *Problems When Uninstalling the Release Script* on page 31 for information about a known problem.

---

**Note** After uninstalling, the Ascent 7.0 Release Script for IBM DB2 Content Manager Enterprise will continue to display in the Release Script Manager, although it will not be functional. To remove the release script from the list, you must go into every batch class and associated document class, select the applicable release script from the Assigned Release Scripts list and click Remove. You must do this for every instance of the Ascent 7.0 Release Script for IBM DB2 Content Manager Enterprise. After all references to the release script are removed, you will be able to delete the Ascent 7.0 Release Script for IBM DB2 Content Manager Enterprise from the Release Script Manager.

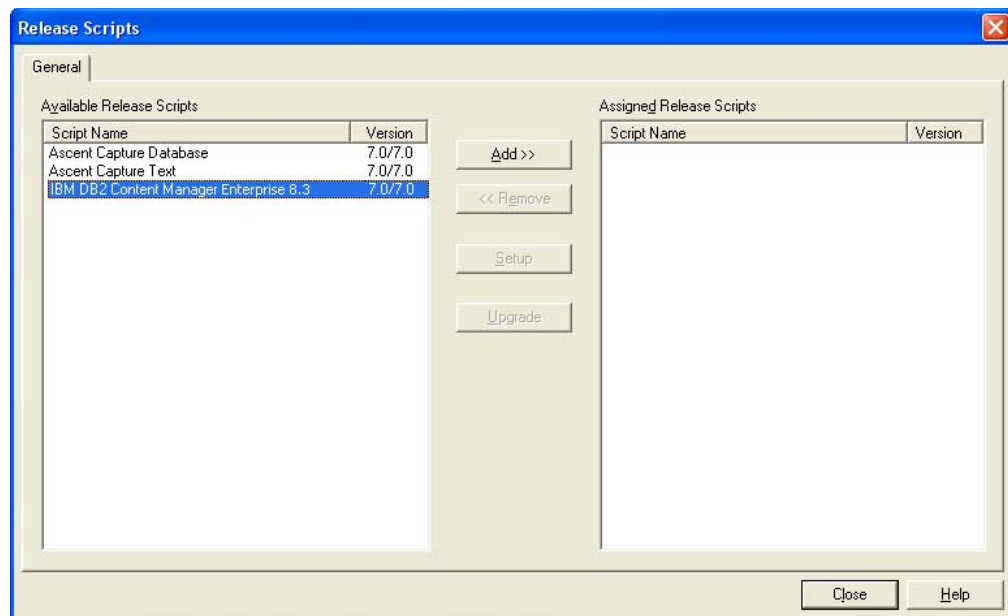
---

## Logging on to the Release Script

Once you have associated a document class with a batch class in Ascent Capture, you may specify the release script to use when releasing your images, OCR full text files, PDF documents, eDocuments, and index data.

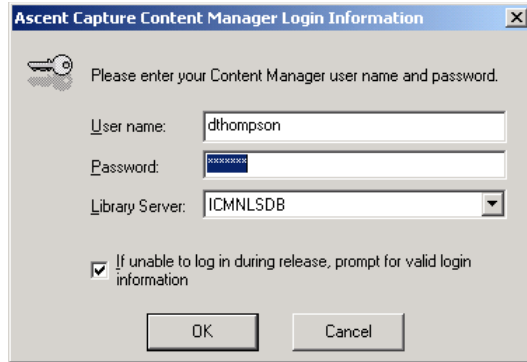
### ► To log on to the release script

- 1 Start the Ascent Capture Administration module. The module's main screen will display.
- 2 Select the Batch class tab from the Definitions panel, and right-click the applicable document class. (Expand the batch class item to select associated document classes.) A context menu will display.
- 3 From the context menu, select "Release Scripts." The Release Scripts dialog box will display.



**Figure 2. Release Scripts Dialog Box**

- 4 The Release Scripts dialog box lists all available release scripts. Available release scripts are those that are registered with Ascent Capture. From the Release Scripts dialog box, select the "IBM DB2 Content Manager Enterprise 8.3/8.4" release script and click Add. The Ascent Capture Content Manager Login Information dialog box will display, Figure 3 on page 21.
- 5 Enter your IBM DB2 Content Manager user name, password and select the DB2 Content Manager library server. The Library Server combo box lists all the available DB2 Content Manager library servers obtained from the Network Table file. This information will be used to log on to the DB2 Content Manager system.



**Figure 3. Ascent Capture Content Manager Login Information Dialog Box**

---

**Note** The login information will be saved and used during release.

---

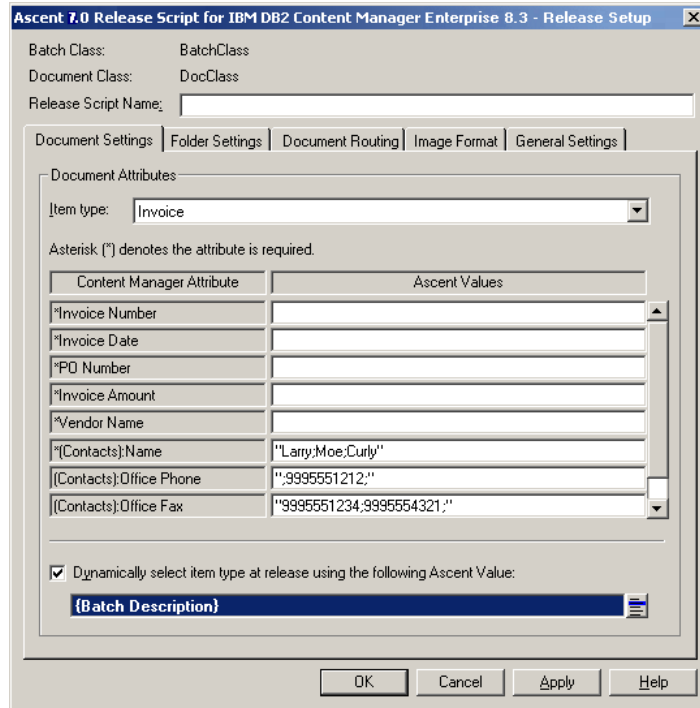
- 6 To prompt for a user ID and password if the release script is not able to log on to IBM DB2 Content Manager at release time, select the “If unable to log in during release, prompt for valid login information” check box.
  - If selected and there is a problem logging on to the IBM DB2 Content Manager Enterprise release script, the Ascent Capture Content Manager Login Information dialog box will appear during release. The user may then enter valid login data and click OK. However, if the user clicks Cancel, the release will fail and the batch will be routed to the Ascent Capture Quality Control module.
  - If not selected and problems occur when logging on to the IBM DB2 Content Manager Enterprise release script, the Ascent Capture Content Manager Login Information dialog box will not display during release. Release will fail and the batch will be routed to the Ascent Capture Quality Control module.

---

**Note** Do not select this feature if you plan to run the Ascent Capture Release module as a service or if you plan to run the Release module during off-hours. The Ascent Capture Content Manager Login Information dialog box requires a user response, which interferes with the automated nature of running the Release module as a service or without operator attention.

---

- 7 Click OK. The Ascent 7.0 Release Script for IBM DB2 Content Manager Enterprise 8.3/8.4 – Release Setup dialog box will display, Figure 4 on page 22.



**Figure 4. Ascent 7.0 Release Script for IBM DB2 Content Manager Enterprise 8.3/8.4 – Release Setup Dialog Box**

- 8 Refer to the next section, *Setting Up the Release Script*, for information about the set up options.

## Setting Up the Release Script

The following sections describe the setup options available with the Ascent 7.0 Release Script for IBM DB2 Content Manager Enterprise.

---

**Note** For more details about the setup options, refer to the Help available from the Ascent 7.0 for IBM DB2 Content Manager Enterprise 8.3/8.4 – Release Setup dialog box.

---

### Document Settings Tab

This tab allows you to select from a list of available Content Manager item types for documents to be released. In addition, this tab allows you to link Ascent Values, Document Index fields, Folder Index fields, Batch fields, and Text Constants to Content Manager attributes. You can optionally assign a dynamic item type to the document.

Ascent 7.0 Release Script for IBM DB2 Content Manager Enterprise 8.3 - Release Setup

Batch Class: BatchClass  
 Document Class: DocClass  
 Release Script Name: \_\_\_\_\_

Document Settings | Folder Settings | Document Routing | Image Format | General Settings

Document Attributes

Item type: Invoice

Asterisk (\*) denotes the attribute is required.

Content Manager Attribute	Ascent Values
*Invoice Number	
*Invoice Date	
*PO Number	
*Invoice Amount	
*Vendor Name	
*{(Contacts).Name	"Larry,Moe,Curly"
{(Contacts).Office Phone	"9995551212;"
{(Contacts).Office Fax	"9995551234;9995554321;"

Dynamically select item type at release using the following Ascent Value:  
 {Batch Description}

OK Cancel Apply Help

Figure 5. Document Settings Tab

## Folder Settings Tab

This tab allows you to specify new or existing folders to use for storing documents in the DB2 Content Manager system. In addition, you can specify a Content Manager item type to use for assigning Content Manager attribute values to folders in the folder hierarchy. You can also specify which attributes can be used as search attributes when searching for pre-existing folders in Content Manager, and you can optionally assign a dynamic item type to each folder.

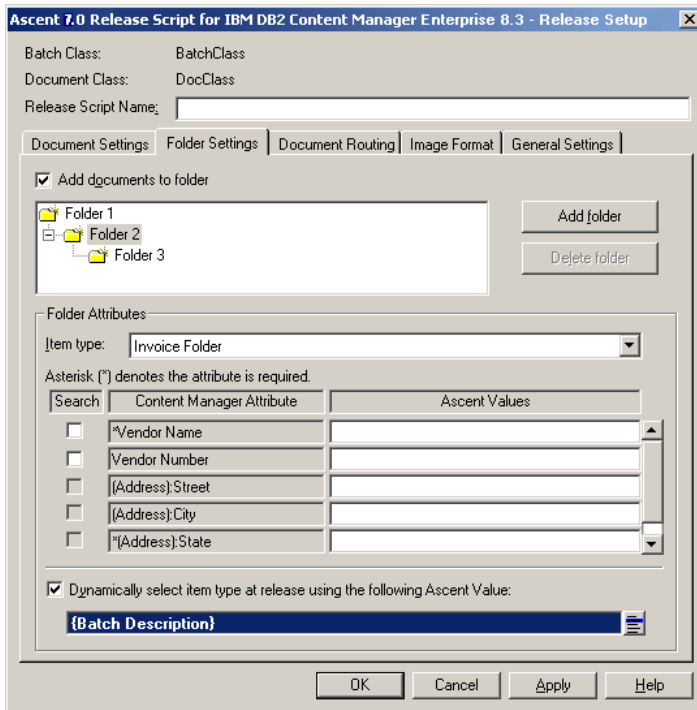


Figure 6. Folder Settings Tab

## Document Routing Tab

This tab allows you to route released documents or route the parent folder for the current folder to the IBM DB2 Content Manager processes. You have the option of either defining static processes or defining dynamic processes. In addition, you can assign priorities for the processes.

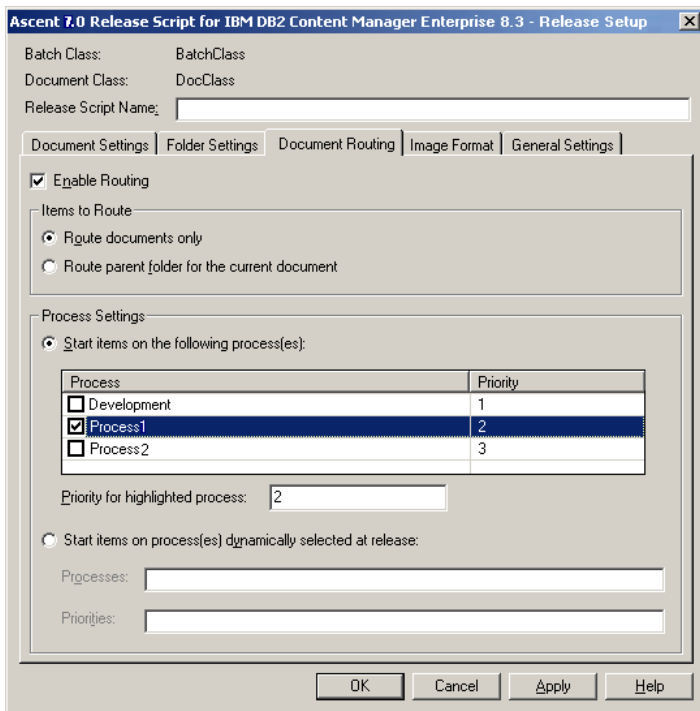


Figure 7. Document Routing Tab

## Image Format Tab

This tab allows you to specify the desired image format for releasing your images. If Adobe PDF is selected as an image type, the PDF Settings on this tab will become available for selection.

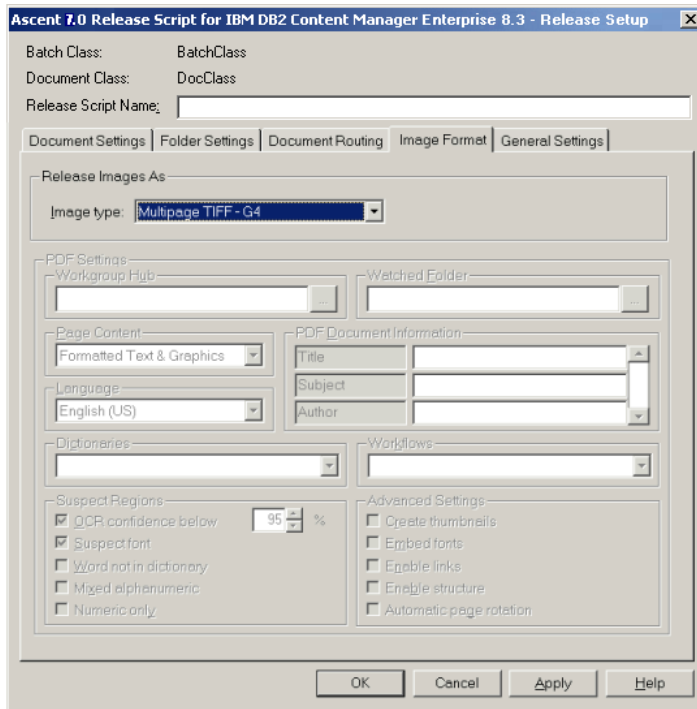


Figure 8. Image Format Tab

## General Settings Tab

This tab allows you to specify a temporary storage location to be used at release time. In addition, you can specify whether to skip the first page of each document. You may want to skip the first page if you are using standalone separator sheets to separate your documents, and you do not want to release the separator sheets. This tab also allows you to indicate whether to make documents text-searchable, search the entire repository for the first folder, specify a multi-value separator, and identifies OCR full text options.

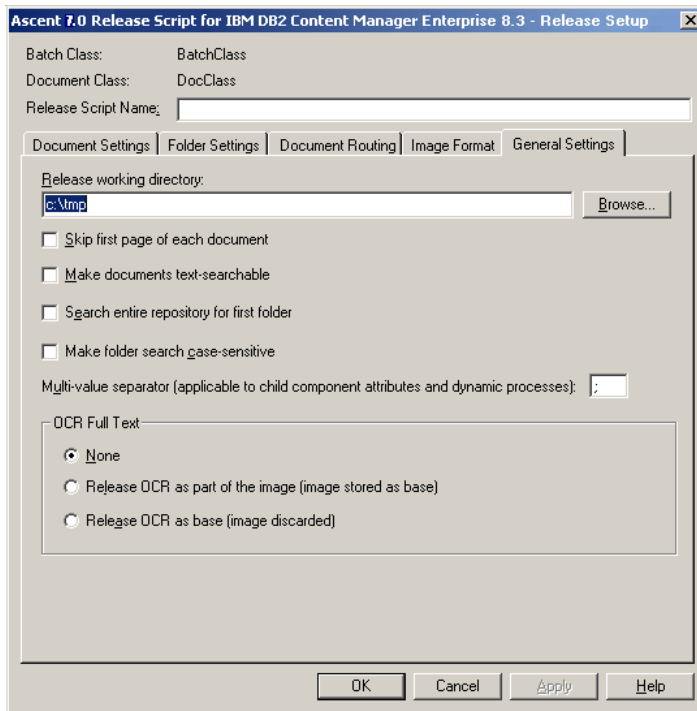


Figure 9. General Settings Tab

## Publishing a Batch Class

After you select all your batch class settings, you must publish your batch class before you can use it. The publishing process checks the integrity of the settings in your batch class, and makes the batch class available for use. If problems are found with any of the settings, error and warning messages will display along with the recommended actions for fixing the problems.

If you ever decide to edit your batch class, you must publish your batch class again before your changes can be used. Your changes will not be applied to batches created before the new publication date.

### ► To publish a batch class

- 1 Start the Ascent Capture Administration module. The module's main screen will display.
- 2 Select the Batch class tab from the Definitions panel, and right-click the applicable batch class. A context menu will display.
- 3 From the context menu, select "Publish." The Publish dialog box will display.
- 4 From the Publish dialog box, select your batch class and click Publish. Ascent Capture will check all of your batch class settings and display the results in the Results box.
  - a If no problems are detected, the message "Publishing successful" will display.
  - b If problems are detected, warning/error messages will display along with the recommended actions to resolve the problems. Perform the recommended actions, and then try to publish the batch class again.
- 5 Run some sample batches through the system to test the operation of the release script.

After successfully publishing, you can create batches based on your batch class. As your batches flow through your Ascent Capture system, they will be routed from module to module. The modules that are used to process a batch, and the order that processing occurs, are specified as part of the batch class definition for the batch.

Refer to the Ascent Capture Help for more information about batch classes (Ascent Capture Help keyword: *Batch classes > about*).

## Releasing Batches

With the Ascent 7.0 Release Script for IBM DB2 Content Manager Enterprise, the Ascent Capture Release module will process batches based on the settings of the associated batch classes. The Release module is responsible for releasing documents, as well as index data using the attributes defined during release setup.

---

**Note** To release to Content Manager, the logged in user must have permissions to add/read folders and add documents to Content Manager. If items are to be started on a process, the user must have those permissions as well. Contact your DB2 Content Manager system administrator for assistance.

---

At release, all pages that belong to a document will be stored in Content Manager as *parts*. All parts use the same Content Manager attributes, allowing a logical association of all pages in the document. This includes document images, OCR full text files, PDF documents, and eDocuments.

---

**Note** Document images, PDF documents, and eDocuments are stored as ICMBASE parts. OCR full text files are stored as ICMBASETEXT. eDocuments will also be stored as ICMBASETEXT when the option "Make documents text-searchable" is enabled on the General Settings tab.

---

The Ascent Capture Release module usually runs as an unattended module on a Windows workstation, periodically polling the Release module for available batches. The Release module may be configured to run during off-hours to avoid any impact to the throughput of Ascent Capture and/or the network system. To start the Release module, select Start | Programs | Ascent Capture | Release. All batches queued for release will be released after initiation of the Release module.

---

**Note** Refer to your Ascent Capture Help for more information about configuring the Release module (Ascent Capture Help keyword: *Release module > about*). You can display Ascent Capture Help from the Help menu available from any Ascent Capture module. Alternatively, you can click Start | Programs | Ascent Capture | Ascent Capture Help.

---

### ► To release a batch

- 1 Start the Ascent Capture Release module. The module's main screen will display. Any batches waiting to be released will be processed.
- 2 Once your batch is released, it will be removed from Ascent Capture. If any documents or pages are rejected, the batch will be routed to the Ascent Capture Quality Control module. If successful, each document's item ID number will display in the Release module event log.
- 3 When you want to exit the Release module, select Batch | Exit from the Release module's menu bar.

## Known Problems

This section contains information about known problems with the Ascent 7.0 Release Script for IBM DB2 Content Manager Enterprise.

### Issues with CM Decimal Attribute

When setting the CM Decimal attribute in the DB2 Content Manager system, be aware that the released value that expands beyond the working precision will simply be truncated. No error message will be displayed. Therefore, if you set the CM Decimal attribute to two decimal places and a value with three decimal places is released to the DB2 Content Manager system, the final value will only have two decimal places. To illustrate, let's say you release the following value to the DB2 Content Manager system: 10.295. That value will display as 10.29 on the Content Manager back end (assuming that the CM attribute was specified with only two decimal places). (SPR 00025892)

### Unexpected Behavior with Child Component Attributes

The Ascent Capture VARCHAR data type is not compatible with the Content Manager Long or Short attribute; however, if you link a Content Manager Long or Short attribute of a child component to an Ascent Capture VARCHAR data type, no error message is displayed at release setup and release will not fail as expected. Any linked VARCHAR data values will not be released into the Content Manager system. (SPR 00026048)

Note that this behavior is not exhibited at the root level. When you attempt to link the Content Manager Long or Short attribute to an Ascent Capture VARCHAR data type, you will receive an error message.

**Workaround:** Do not link a Content Manager Long or Short attribute to a VARCHAR data type.

### Ascent Value {Document Count}

When the Ascent Capture Value {Document Count} is linked to the Content Manager Char\_Numeric attribute, release will not trim the value. The release will occur successfully; however, the following message will display when the attribute is closed in Content Manager. (SPR 00026002)

```
Value "1    " for attribute Child1A/Char_Numeric (numeric string) has an invalid character.
```

**Workaround:** Edit the value and remove the blank spaces.

### Online Help Documentation – Ascent Value Data Types

The following Ascent Value data types are not documented correctly in the online Help system that came with your product. The *Data Type Compatibility* online Help topic does not list the correct information in the Ascent Capture Batch Fields and Index Fields table. (SPRs 00025909 and 00025939)

Note that Figure 11 on page 39 accurately portrays the supported Ascent Capture batch fields and index fields for the Content Manager attributes.

## FLOAT and REAL Data Types

When the Ascent Values FLOAT and REAL fields are copied to Content Manager attributes, the data types will not convert to the Content Manager Double data type. However, the values will convert to Content Manager Character and Variable Character data types.

## Problems When Installing on Windows XP

If you are installing the Ascent 7.0 Release Script for IBM DB2 Content Manager Enterprise on a Windows XP Professional workstation and you specify a mapped drive, you will receive the following error message. (SPR 31250)

Error 1904. Module <mapped drive> failed to register. HRESULT -2147467259. Contact your support personnel .

**Workaround:** The error message is incorrect and can simply be ignored. Click the Ignore button and the release script will successfully install and register the release script.

If you click the Abort button, the installation will end. If you click the Retry button, you will receive the error message again.

## Problems When Uninstalling the Release Script

If you click the Cancel button while you are uninstalling the release script, all the release script original files will remain properly installed on the system. However, depending on the point during the uninstallation that the Cancel button is clicked, the release script may be un-registered. In such a case, once you attempt to log on to the release script, login will fail. (SPR 31221)

**Workaround:** If this problem occurs, run Repair. Refer to *Repairing the Release Script* on page 18 for more information. Alternatively, you can re-register the release script in the Release Script Manager.

## Required BLOB and CLOB Attributes Not Supported

This release script does not support item types that contain required BLOB (Binary Large Object) or CLOB (Character Large Object) attributes. If you attempt to use such item types, no error or warning message will be generated at release setup. However, the batches will fail at release and you will receive the following error message. (SPR 00009834)

0, DGL3617A: An attribute value is required; ICM7016: A request to create or update an item or component record was made, but no value was provided for an attribute that is defined as NOT NULL. Modify the application to require a value for any NOT NULL attributes.

**Workaround:** Do not use item types that contain required BLOB or CLOB attributes. If you do, your batches will fail at release. If this occurs, you must delete your batches, edit your setup settings to use item types that do not contain required BLOB or CLOB attributes, and then re-create your batches.

## Releasing PDF Documents Using Ascent Capture Multiple Release Feature

When releasing PDF documents with the Ascent Capture multiple release feature, the batch may occasionally fail. (SPR 00009835)

**Workaround:** Unreject your batch in the Ascent Capture Quality Control module and process the batch again to release it.

## MIME Types Must Exist in Content Manager

When releasing an eDocument with a MIME type that does not exist on the Content Manager server, an error similar to the following will occur and the eDocument will be rejected. (SPRs 28153 and 28252)

```
Method '~' of object '~' failed.
```

**Workaround:** Add the MIME-compliant application that you need to your DB2 Content Manager system (for instance, you will need to install the Microsoft Excel software to open XLS MIME types). Once the applicable MIME types exist in Content Manager, you can unreject the document and re-release it.

---

**Note** To release eDocuments, the MIME types for the eDocuments must be in lowercase letters on your DB2 Content Manager system. Contact your Content Manager administrator for more information about adding MIME types.

---

## User-Defined Ranges for Document Attribute Values

Range checking is not performed in all cases at release setup or release for Ascent Values linked to document attributes for which user-defined ranges have been specified in Content Manager. At release, if an Ascent Value falls outside of the valid range for a document attribute, the following will occur.

**For Long/Short Integer Data Types** (SPR 00009828):

- Long or Short integer values that fall outside of the range specified in Content Manager will retain their values and will be released into Content Manager. No warning or error message will be generated.

**For CHAR and VARCHAR Data Types** (SPR 00009736):

- VARCHAR values with lengths that are less than the minimum allowed length will be released into Content Manager. No warning or error message will be generated.
- CHAR and VARCHAR values with lengths that exceed the maximum allowed length will generate the following error message at release:

```
The size of the attribute <attribute name> specified <attribute size> is greater than the size <maximum length> specified in the item type definition.
```

**Workaround:** If this problem occurs, adjust your values so that they fall within the allowed length or range, and then re-release the batch. If this is not possible, delete the batch in error in Batch Manager. When linking Ascent Values to Content Manager document attributes during release setup, make certain that you know the valid ranges for values. Then, only link Ascent Values that are valid for the attributes.

## Releasing Single Page TIFFs

If you are having problems releasing documents as single page TIFFs, make sure that you have the latest Fix Packs from IBM. Releasing numerous images may cause the release to fail with the following parsing error message. (IBM PMR 30284, 004; Kofax SPR 28201)

```
Internal error occurred; an error occurred during parsing Return Code: 7047 Element
ID: 129
```

In certain circumstances, release will succeed when releasing a large volume of documents; however, you will not be able to view the documents in the IBM Viewer. No error message is generated. (IBM PMR 68522, 756; Kofax SPR 28201)

This is due to a problem with IBM Content Manager.

**Workaround:** Use multipage TIFFs instead.

## Releasing Date Fields

When releasing Date fields, you must use the forward slash (for example, YYYY/MM/DD). If you use a point separator (for example, YYYY.MM.DD) or the German date format (DD.MM.YYYY), release setup will not notice that you entered an invalid format for a text constant and will allow you to save your settings. The IBM DB2 Content Manager Enterprise release script is not able to validate the Date fields at release when point separators are used. The documents will fail at release. (SPR 27094)

**Workaround:** Make certain that the settings you specify at release setup do not yield dates with point separators. In addition, make certain that the date format is YYYY/MM/DD, where YYYY is the year, MM is the month, and DD is the day of the month. If necessary, you can write a custom validation script that checks the date format when batches are processed with the Validation module, and adjusts the format as necessary.

## Releasing eDocuments with 0 Bytes

If you are releasing eDocuments, your eDocument files must be larger than 0 bytes or the release will fail with error messages. (SPRs 28173 and 00017322)

The following error message will display in the Release module:

```
Release Script Returned -1. Your release script may need to be re-installed.
```

The following error message will display in the error log file:

```
DGL5363A: The file attributes (such as size and date) have been changed unknowingly by
a third party or programs. :: [File handle] 0x0000e58 [Access] 2 [File size] 0 (STATE)
: ERROR_FILE_INVALID.
```

**Workaround:** Make certain that you do not create batches with eDocuments of 0 bytes.

## Scanning Non-Image Documents

If you enable the “Release OCR as base (image discarded)” option on the General Settings tab and use the Kofax Advanced OCR Full Text Recognition profile for the document class properties, you will receive the following error message while scanning in non-image documents. (SPR 30456)

You have selected to release OCR Full Text as base, but this document does not contain OCR Full Text files.

On the other hand, if you use the Kofax OCR Full Text Recognition profile for the document class properties, you will not receive an error.

## Upper ASCII Character Limitations

When you have Unicode enabled on your system, Content Manager counts upper ASCII characters as two characters. Therefore, it is possible to inadvertently exceed the assigned string length for an Attribute if characters with umlauts are used. For example, if you have a data type with 32 characters in length and you enter more than 16 upper ASCII characters, you may receive **one** of the following error messages when you attempt to link the folder or document properties with the data type. (IBM PMR 17880; Kofax SPR 00009882)

DGL3616A: An unexpected SQL error occurred; ICM7015: During an SQL operation in the library server, an unexpected error occurred. For details on the error, from a DB2 command prompt enter DB2?SQLnnnn. (STATE): [LS RC = 7015, SQL RC = -311].

Or

Release Script Returned -1. Your release script may need to be re-installed.

**Workaround:** Make certain that your data fields are long enough to accept upper ASCII characters.

## Releasing Documents Using Ascent Capture Multiple Release Feature

If you are using the Ascent Capture multiple release feature and you are releasing documents to the same destination, the second document will occasionally fail with the following error message. (SPR 00009853)

File already exists.

**Workaround:** Unreject your batch in Quality Control and delete the temporary file from the Release working directory. Process the batch again to release it.

## Make Documents Text Searchable Option

If you have enabled the “Make documents text-searchable” option on the General Settings tab and you have not included the ICMBASETEXT part, your document will occasionally fail with the following error message. (SPR 00009854)

Release Script Returned -1. Your release script may need to be re-installed.

**Workaround:** To avoid this problem, make sure that the item type you are releasing contains the ICMBASETEXT part. Additionally, if you are releasing OCR full text or text-searchable documents, verify that the item type also contains the ICMBASETEXT part.

## Using the Dynamic Item Types Feature with Child Component Attributes

Due to a limitation with Content Manager, you will not be able to create a child component attribute name that has the same name as another child component attribute in another item type. Therefore, you cannot use the dynamic item types feature with child component attributes. (IBM PMR 65664, 756; Kofax SPR 00010054)

## Dynamic Process

When dynamically assigning a process name at release, you must use the process name. If you attempt to use the process description, you may receive the following error message. (SPR 00010053)

The process name length is greater than the maximum length of 32.

Notice that this problem also occurs with Dynamic Item Types.

**Workaround:** Use the process name when dynamically assigning a process. The process name must match the existing process name in the IBM DB2 Content Manager library server.

## Using NULL Values

The cardinality of each set of multiple values entered in each child component attribute must be equal, even if the attribute value is left blank. Therefore, no spaces or empty quotes should appear between the entries to represent a NULL value. If you attempt to use empty quotes between the delimiter for a NULL value, you may receive the following error message. (SPR 00010080)

Error in document #1, 0. The value provided for the attribute *<attribute>* is not valid. Please verify that all Ascent Values are correct and try again.

For example, let's say that you need to enter the following multiple values for the child component attributes into the release script:

- "apple" value
- empty or NULL value
- "orange" value
- "pear" value

You would type the following (assuming that you specified a single semi-colon (;) character as the delimiter on the General Settings tab):

```
apple; ; orange; pear
```

Double quotes and spaces will not be interpreted as a NULL value. Therefore, you may receive the error message depending upon which character is allowed for your item type. For example, if you enter the following in a numeric field, you will receive the error message:

```
10; " "; 20; 30
10; ; 20; 30
```

**Workaround:** Do not use empty quotes or blank spaces to represent a NULL value when entering multiple values.

## Minimum Cardinality Not Met

On the Content Manager back end, you can set the minimum cardinality for a child component. When you set the minimum cardinality equal to zero (the default setting), then you can leave some of the child attributes unlinked. However, if the minimum cardinality is greater than or equal to one, then all the child attributes must be linked. (IBM PMR 67634, 756; Kofax SPR 00010069)

If the cardinality of each set of multiple values entered for a particular child component is not equal, then the release will fail with the following error message:

The number of child component rows provided is less than the minimum required in the definition of the component type (STATE): [LS RC=7981] one or more required attributes for this document may be missing. Please verify that all Ascent Values are correct and try again.

For demonstration, let's say that you need to enter the following information and you have set the minimum cardinality on the back end to 4.

**Table 2. Car Model and Year**

Model	Year
Chevrolet	2004
Ford	1998
GM	1987

You will receive the error message when you attempt to do **one** of the following:

- Do not link any of your child attributes. For example:

<b>Model</b>	
<b>Year</b>	

- Partially link your child attributes. For example (assuming that you specified a single semi-colon (;) character as the delimiter on the General Settings tab):

<b>Model</b>	Chevrolet;;Ford;GM
<b>Year</b>	

- Link your child attributes, but the cardinality does not equal the minimum of 4. For example (assuming that you specified a single semi-colon (;) character as the delimiter on the General Settings tab):

<b>Model</b>	Chevrolet;Ford
<b>Year</b>	2004;1998

The following will succeed.

- You link all your child attributes. For example:

<b>Model</b>	Chevrolet;;Ford;GM
<b>Year</b>	2004;;1998;1987

**Workaround:** Make sure that the minimum cardinality of each set of multiple values entered in each child component attribute is equal, even if the attribute value is left blank.

## Required Child Component Attributes and Minimum Cardinality of Zero

If the minimum cardinality for a child component is equal to zero and one or more of its child attributes are required, Content Manager will allow you to release even if the child attribute values are unlinked or left blank. The release script will not fail as expected. This is due to a problem with IBM Content Manager. (IBM PMR 59297, 756; Kofax SPR 30207)

**Workaround:** Make sure that the minimum cardinality for a child component is greater than or equal to one. This ensures that all the required and non-required child attributes must be linked. Refer to *Minimum Cardinality Not Met* on page 36.

## Time Stamp Data Type Must Have a Value

If you leave the Time Stamp data type field blank and release, release will not fail as expected. Instead, a document will be created on the Content Manager back end with a blank Time Stamp attribute. (SPR 00009820)

**Workaround:** Make sure that the Time Stamp data type you are releasing is not left blank.

## “Unable to Check Out Item” Error

If you attempt to release simultaneously using multiple release workstations, you may receive the following error message. (SPR 00009897)

```
Release Error: Script #1 (IBM Content Manager Enterprise 8.3/8.4) [0 DGL0546A: Unable
to check out item : (STATE) : [LS RC=7400]. If you are releasing to folders, the
destination folder might be in use or checked out. The destination folder must be
checked in before documents can be released to it.]
```

When simultaneously releasing to multiple workstations, be aware that workstations may attempt to check out the same folder. When this occurs, the first workstation that requested the folder will be able to check out that folder, subsequent workstations will receive the error message and their batch will be routed to the Ascent Capture Quality Control module.

**Workaround:** Unreject the batch in the Ascent Capture Quality Control module and process the batch again to release it.

## Linking Only Child Component Attributes

If you attempt to release with only the child component attribute linked and the parent level attribute is unlinked, release will fail with an error message. (SPR 00013984)

**Workaround:** When releasing linked child component attributes, make certain that the parent level attribute is also linked.

## Appendix A – Data Type Compatibility

The figures in this appendix map Ascent Capture data types to Content Manager data types, and indicate which combinations are valid.

Refer to your Ascent Capture Help for more information about Ascent Capture data types (Ascent Capture Help keyword: *Data types*). You can display Ascent Capture Help from the Help menu available from any Ascent Capture module.

### Ascent Value Data Types

When Ascent Value fields are copied to Content Manager attributes, their data types are converted to Content Manager data types. The following figure lists the supported Ascent Capture batch fields and index fields for the Content Manager attributes.

Ascent Value Data Types	Character	Variable Character	Short Integer	Long Integer	Decimal	Double	Date	Time	Time Stamp
CHAR	✓	✓							✓
DATE	✓	✓					✓		
DECIMAL	✓	✓			✓				
DOUBLE	✓	✓				✓			
FLOAT	✓	✓							
INTEGER	✓	✓		✓					
NUMERIC	✓	✓			✓				
REAL	✓	✓							
SMALLINT	✓	✓	✓						
TIME	✓	✓					✓		
VARCHAR	✓	✓							✓

Figure 10. Ascent Value Data Types

## Ascent Capture Values

The following figure lists the Ascent Capture values for Content Manager attributes.

Refer to your Ascent Capture Help for more information about Ascent Capture values (Ascent Capture Help keyword: *Ascent Capture > values*)

Ascent Capture Values	Character	Variable Character	Short Integer	Long Integer	Decimal	Double	Date	Time	Time Stamp
{Batch Creation Date}	SC3	SC3	SC2	SC2	SC2	SC2	✓	SC1	SC2
{Current Date}	SC3	SC3	SC2	SC2	SC2	SC2	✓	SC1	SC2
{Document Count}	SC3	SC3	✓	✓	✓	✓	SC1	SC2	SC2
{First Page Roll Number}	SC3	SC3	✓	✓	✓	✓	SC1	SC2	SC2
All other Ascent Capture Values	SC3	SC3	SC3	SC3	SC3	SC3	SC3	SC3	SC3

**Legend**

✓ Passes Release setup and Release.

SC1 Special Case 1: The document will release with invalid data.

SC2 Special Case 2: The document will receive an error at release.

SC3 Special Case 3: If a valid value is entered, the document will release. Otherwise, the document will receive an error at release.

**Figure 11. Ascent Capture Values**

## Ascent Capture Text Constants

The following figure lists the supported Content Manager attributes for Ascent Capture text constants.

Ascent Capture Text Constants	Character	Variable Character	Short Integer	Long Integer	Decimal	Double	Date	Time	Time Stamp
Text Constants	SC	SC	SC	SC	SC	SC	SC	SC	SC

SC Special Case: Depends upon the value. For example, if you are releasing a Date value, the release script will expect a Date value.

**Figure 12. Ascent Capture Text Constants**

## Appendix B – Quick Reference for Releasing OCR Full Text Files

The following figure provides a quick reference for setting up the release of OCR full text files to IBM DB2 Content Manager. It lists the following:

- OCR full text options are supported by the IBM DB2 Content Manager Enterprise release script. The options are available from the General Settings tab. Refer to the section *General Settings Tab* on page 27 for a description of the tab.
- Content Manager item type requirements for using the release script's OCR full text options.
- Information about how document parts are stored in Content Manager, based on the selected OCR full text option, the type of documents being released, and the item type.

Refer to the documentation that came with your DB2 Content Manager Enterprise Edition product for more details about setting up item types in Content Manager.

Release Script Setting	Requires:		Parts are stored as:		
OCR Option	Item Type	Semantic <sup>1</sup> Type	Ascent Document Part	Part Type <sup>2</sup>	Semantic <sup>1</sup> Type
None	Type: Document	BASE	Images	ICMBASE	BASE (visible)
	Searchable: Makes no difference		eDocuments	ICMBASE ICMBASETEXT <sup>3</sup>	BASE (visible)
	Doc Mgmt: Add BASE part type as minimum.		OCR Full Text	Not released	Not released
Release OCR as part of image (image stored as base)	Type: Document	BASE, KofaxOCR	Images	ICMBASE	BASE (visible)
	Searchable: Yes		eDocuments	ICMBASE ICMBASETEXT <sup>3</sup>	BASE (visible)
	Doc Mgmt: Add BASE, ICMBASETEXT part type as minimum.		OCR Full Text	ICMBASETEXT	KofaxOCR (not visible)
Release OCR as base (image discarded)	Type: Document	BASE	Images	Not released	Not released
	Searchable: Yes		eDocuments	ICMBASE ICMBASETEXT <sup>3</sup>	BASE (visible)
	Doc Mgmt: Add BASE, ICMBASETEXT part type as minimum.		OCR Full Text	ICMBASE	BASE (visible)

Figure 13. OCR Full Text Option Requirements

- 1 BASE is visible via the Content Manager Windows client application.  
KofaxOCR is invisible via Content Manager Windows client application.

---

**Note** To release OCR as part of the image (image stored as base), the KofaxOCR semantic type must be created on the Content Manager server. Refer to the documentation that came with your DB2 Content Manager Enterprise Edition product for more information about creating semantic types.

---

- 2 ICMBASE part is base document. It is not text searchable.  
ICMBASETEXT part is text searchable through the IBM Net Search Extender (NSE). NSE is formerly known as the Text Information Extender (TIE) in previous versions.
- 3 eDocuments can also be stored as ICMBASETEXT when the option "Make documents text-searchable" is enabled on the General Settings tab.

## Appendix C – Kofax Technical Support

For additional technical information about Kofax products, visit the Kofax Web site at [www.kofax.com](http://www.kofax.com) and select an appropriate option from the Support menu. The Kofax Support pages provide product-specific information, such as current revision levels, the latest drivers and software patches, online documentation and user manuals, updates to product release notes (if any), technical tips, and an extensive searchable knowledgebase.

The Kofax Web site also contains information that describes support options for Kofax products. Please review the site for details about the available support options.

If you need to contact Kofax Technical Support, please have the following information available:

- Ascent Capture software version
- IBM DB2 Content Manager Enterprise release script version
- Operating system and Service Pack version
- Network and client configuration
- Copies of your error log files
- Information about your release script

