

Kofax Capture

Ascent® 6.1 Release Script for
IBM DB2 Content Manager 8.1-8.2
Release Notes



© 1994 - 2010 Kofax, Inc., 15211 Laguna Canyon Road, Irvine, California 92618, U.S.A. All rights reserved. Use is subject to license terms.

Third-party software is copyrighted and licensed from Kofax's suppliers. This product includes software developed by the Apache Software Foundation (<http://www.apache.org/>).

This product is protected by U.S. Patent No. 6,370,277.

THIS SOFTWARE CONTAINS CONFIDENTIAL INFORMATION AND TRADE SECRETS OF KOFAX, INC. USE, DISCLOSURE OR REPRODUCTION IS PROHIBITED WITHOUT THE PRIOR EXPRESS WRITTEN PERMISSION OF KOFAX, INC.

Kofax, the Kofax logo, Ascent Capture, the Ascent Capture logo, and Ascent are trademarks or registered trademarks of Kofax, Inc. in the U.S. and other countries.

IBM DB2 Content Manager is a registered trademark of IBM Corporation.

Microsoft and Windows are registered trademarks of Microsoft Corporation.

All other product names and logos are trade and service marks of their respective companies.

U.S. Government Rights Commercial software. Government users are subject to the Kofax, Inc. standard license agreement and applicable provisions of the FAR and its supplements.

You agree that you do not intend to and will not, directly or indirectly, export or transmit the Software or related documentation and technical data to any country to which such export or transmission is restricted by any applicable U.S. regulation or statute, without the prior written consent, if required, of the Bureau of Export Administration of the U.S. Department of Commerce, or such other governmental entity as may have jurisdiction over such export or transmission. You represent and warrant that you are not located in, under the control of, or a national or resident of any such country.

DOCUMENTATION IS PROVIDED "AS IS" AND ALL EXPRESS OR IMPLIED CONDITIONS, REPRESENTATIONS AND WARRANTIES, INCLUDING ANY IMPLIED WARRANTY OF MERCHANTABILITY, FITNESS FOR A PARTICULAR PURPOSE OR NON-INFRINGEMENT, ARE DISCLAIMED, EXCEPT TO THE EXTENT THAT SUCH DISCLAIMERS ARE HELD TO BE LEGALLY INVALID.

Contents

Introduction	1
Additional Documentation	1
System Requirements	2
IBM DB2 Content Manager Server Support	2
Client Operating System Support	2
Administration and Release Workstations - Additional Requirements	3
DB2 Content Manager for Multiplatforms V8.1	3
DB2 Content Manager for Multiplatforms V8.2	3
DB2 Content Manager Express Edition V8.2	3
Features	4
IBM DB2 Content Manager 8.2 (German) Supported	4
Child Components Attribute Supported	4
Release Script Information Interchange Supported	4
Dynamic Item Types	4
Access Control / Permission Support	4
Multiple Values	5
SecurityBoost Supported	5
Folder Searching	5
Processes and Priorities	5
Online Help Available for Release Setup	5
Image Support	6
Kofax PDF	6
Adobe PDF Support	6
OCR Full Text Support	6
Miscellaneous Issues	7
Unsupported Ascent Capture Features	7
File Name Retention	7
Text Searching Options	7
Images and eDocuments	7
OCR Full Text	8
PDF Documents	8
{Index Operator's Station ID} Ascent Capture Value	8
eDocument Names Not Preserved at Release	8
Multi-value Separator Option	8
Searching for Folder Child Component Attributes	9
Sharing Data Among Release Scripts	9
Invalid Characters	10
OCR Full Text Options	11
Kofax PDF Options	12
Adobe Acrobat Capture Options	13

Operating System Requirements for Ascent Capture	13
Adobe Acrobat Capture and the Ascent Capture Release Workstation Installations	13
Workflow Steps	13
Multipage TIFFs	14
Releasing from Multiple Ascent Capture Standalone Workstations	14
Re-releasing Documents in Error	14
Invalid Watched Folders	14
Installing the Release Script	15
Important Note About Installation	15
Installation Instructions	15
Upgrading the Release Script	16
Upgrade Instructions	16
Application Maintenance	17
Repairing the Release Script	17
Removing the Release Script	18
Licensing	19
Ascent Capture Evaluation License	19
Activating the Release Script License	19
Logging on to the Release Script	21
Setting Up the Release Script	24
Document Settings Tab	24
Folder Settings Tab	25
Document Routing Tab	26
Image Format Tab	27
General Settings Tab	28
Publishing a Batch Class	29
Releasing Batches	30
Known Problems	31
Problems When Installing on Windows XP	31
Problems When Uninstalling the Release Script	31
Required BLOB and CLOB Attributes Not Supported	31
Problems with Releasing High Volumes of Documents	32
Releasing PDF Documents Using Ascent Capture Multiple Release Feature	32
MIME Types Must Exist in Content Manager	32
User-Defined Ranges for Document Attribute Values	33
Performance Issues with Folders	33
Releasing Single Page TIFFs	33
Releasing Date Fields	34
Releasing eDocuments with 0 Bytes	34
Scanning Non-Image Documents	34
Upper ASCII Character Limitations	34
Releasing Documents Using Ascent Capture Multiple Release Feature	35
Make Documents Text Searchable Option	35
Using the Dynamic Item Types Feature with Child Component Attributes	35

Dynamic Process35

Using NULL Values36

Minimum Cardinality Not Met37

Required Child Component Attributes and Minimum Cardinality of Zero38

Appendix A - Data Type Compatibility39

 Ascent Value Data Types39

 Ascent Capture Values39

 Ascent Capture Text Constants40

Appendix B - Quick Reference for Releasing OCR Full Text Files41

Appendix C - Kofax Technical Support42

Introduction

This document contains the release notes for the Ascent 6.1 Release Script for IBM DB2 Content Manager for Multiplatforms, which supports DB2 Content Manager for Multiplatforms V8.1, DB2 Content Manager for Multiplatforms V8.2, and DB2 Content Manager Express Edition V8.2. This release script copies document images, eDocuments, OCR full text files, and PDF documents to permanent storage and writes document/index data to your IBM DB2 Content Manager for Multiplatforms or IBM DB2 Content Manager Express system.

Hereafter this document will refer to the name of the release script as simply IBM DB2 Content Manager.

Please read these notes carefully as they contain information not included in the Ascent Capture Help or printed documentation.

Additional Documentation

These release notes are a supplement to the following:

- *Ascent Capture Advanced Features Guide*
- *Ascent Capture Release Notes*
- *Getting Started with Ascent Capture guide*
- *Installation Guide for Ascent Capture and Ascent Capture Internet Server*
- *Learning Ascent Capture guide*
- Help provided from any of the Ascent Capture modules
- Help provided with the Ascent 6.1 Release Script for IBM DB2 Content Manager for Multiplatforms 8.1-8.2 and Content Manager Express 8.2

For more information about DB2 Content Manager for Multiplatforms, DB2 Content Manager Express, or other IBM products, contact your IBM Content Manager representative or refer to the documentation that came with your DB2 Content Manager product.

Tip For additional information about Kofax products, visit our Web site at www.kofax.com and go to the Technical Support pages. The Technical Support Web pages provide product-specific information, such as current revision levels, the latest drivers and software patches, technical tips, and searchable knowledgebase. In addition, updates to product documentation (if any) are available from these pages.

System Requirements

The IBM DB2 Content Manager release script requires the following components to be installed prior to installing this release script.

IBM DB2 Content Manager Server Support

The IBM DB2 Content Manager release script requires the following network server components:

- DB2 Content Manager for Multiplatforms V8.1 (Windows, AIX), DB2 Content Manager for Multiplatforms V8.2 (Windows, AIX), or DB2 Content Manager Express Edition V8.2 (Windows)
- DB2 Content Manager supported database

Note If you are using DB2 Content Manager for Multiplatforms V8.2, PTF 6 is required when using IBM WebSphere Server version 4.0. For more information about the IBM WebSphere Server, refer to the IBM Technical Support Web site or contact your IBM Content Manager representative.

Client Operating System Support

The IBM DB2 Content Manager release script supports the following client platforms:

- Ascent Capture 6.0 supports the following operating systems:
 - Windows 2000 Professional with Service Pack 3
 - Windows 2000 Server with Service Pack 3
 - Windows XP Professional with Service Pack 1 or Service Pack 2
- Ascent Capture 6.1 supports the following operating systems:
 - Windows 2000 Professional with Service Pack 4
 - Windows 2000 Server with Service Pack 4
 - Windows Server 2003 (Standard or Enterprise Edition)
 - Windows XP Professional with Service Pack 2
- Ascent Capture 7.0 supports the following operating systems:
 - Windows 2000 Professional with Service Pack 4
 - Windows 2000 Server with Service Pack 4
 - Windows Server 2003 with Service Pack 1 (Standard or Enterprise Edition)
 - Windows XP Professional with Service Pack 2

Note At the time of publishing these release notes, the IBM DB2 Content Manager release script was certified with the Service Packs listed above.

Administration and Release Workstations – Additional Requirements

The Ascent Capture Administration and Release workstations must have the following components installed:

- Ascent Capture 6.0, 6.1, 7.0, 7.5, Kofax Capture 8, or Kofax Capture 9

In addition, for full release script functionality, the IBM DB2 Server requires **one** of the following environments installed and its corresponding components.

DB2 Content Manager for Multiplatforms V8.1

- IBM DB2 Runtime (see Tip below)
- IBM Enterprise Information Portal (EIP) Desktop Client with Content Manager V8.1 connector with Fix Pack 8.1.2

DB2 Content Manager for Multiplatforms V8.2

- IBM DB2 Runtime (see Tip below)
- IBM DB2 Information Integrator for Content Client (*formerly known as the IBM Enterprise Information Portal in versions 8.1 and earlier*) with Fix Pack 7

DB2 Content Manager Express Edition V8.2

- IBM DB2 Runtime (see Tip below)
- IBM DB2 Content Manager Express Desktop Client V8.2

Warning Any third party applications (including this release script) that attempt to install and use the Content Manager Express system, will not be able to access the Information Integrator (formally known as EIP) Content Manager C++ connector until it is added to the PATH environment variable. Please refer to the IBM Technote – 21160381 (<http://www-1.ibm.com/support/docview.wss?uid=swg21160381>) or contact your IBM Content Manager representative for assistance.

Tip The IBM DB2 Runtime files can be installed with the DB2 Administration application. Contact your IBM Content Manager representative for alternative installation sources. (SPR 28024)

Note This release script was tested with DB2 Content Manager Express (with Fix Pack 4) in a Windows environment using Net Search Extender Express version 8.1.4 (with Fix Pack 4), Content Manager Express V8.2, and WebSphere Express version 5.0.2. Additional testing was performed with DB2 Content Manager for Multiplatforms V8.2 (with Fix Pack 7) in a Windows environment, using IBM DB2 Enterprise Edition version 7.2 (with Fix Pack 13), Net Search Extender version 7.2 (with Fix Pack 2), WebSphere version 4.0.6, and Information Integrator version 8.2 (with Fix Pack 7).

Features

This section contains information about features provided with the IBM DB2 Content Manager release script.

IBM DB2 Content Manager 8.2 (German) Supported

The IBM DB2 Content Manager release script supports releasing to IBM DB2 Content Manager (German) version 8.2.

Child Components Attribute Supported

The IBM DB2 Content Manager release script supports attributes belonging to the first level child components for folder attributes and document attributes. The display format is:

`{<Child Component name>}: <Attribute name>`

Release Script Information Interchange Supported

The IBM DB2 Content Manager release script supports the Ascent Capture Release Script Information Interchange feature. This feature allows the release scripts to pass information to other release scripts.

Note Release scripts that use Ascent Capture Release Script Information Interchange features will not be compatible with versions of Ascent Capture prior to 6.1.

Refer to *Sharing Data Among Release Scripts* on page 9 for more information.

Dynamic Item Types

The IBM DB2 Content Manager release script allows you to dynamically assign an item type to your released folders or documents at release time.

Access Control / Permission Support

The IBM DB2 Content Manager release script will only allow the users to view the item types that they have permission to view.

Multiple Values

The IBM DB2 Content Manager release script supports properties that contain multiple values. You can specify the desired delimiter to separate the values when entering multiple values for the child component attributes, dynamic processes, and dynamic priorities using the Multi-value separator option as specified on the General Settings tab. For example, if you specified a single semi-colon (;) delimiter for the multi-value separator, you would enter the following:

```
apple; orange; pear
```

No spaces should appear between the entries to separate the values.

Refer to *Multi-value Separator Option* on page 8 for more information.

SecurityBoost Supported

The IBM DB2 Content Manager release script supports the Ascent Capture SecurityBoost feature. The SecurityBoost feature allows you to enhance Ascent Capture security for systems using Windows XP and Windows 2000.

Refer to your Ascent Capture Help for more information about the SecurityBoost feature. (Ascent Capture Help keyword: *SecurityBoost > about*)

Folder Searching

The IBM DB2 Content Manager release script can search the entire DB2 Content Manager repository for the first folder in the folder hierarchy defined in the Folder Settings tab at release setup. If a match is found, then the first folder will be used to find the child folder hierarchy.

Processes and Priorities

The IBM DB2 Content Manager release script allows you to specify whether to route your released documents or to route the parent folder for the current document to either statically or dynamically assigned IBM DB2 Content Manager processes. In addition, the release script allows you to statically or dynamically assign priorities for the processes.

Online Help Available for Release Setup

The IBM DB2 Content Manager Help is installed with your release script. It is available from the Administration module when you are setting up your release script. You can click the Help button from the Ascent 6.1 for IBM DB2 Content Manager 8.1-8.2 – Release Setup dialog box to display help information about release options.

Image Support

This release script supports the following file formats/compression formats:

- Multipage TIFF – Group 4 Compression
- Multipage TIFF – Uncompressed Image Format
- Single page TIFF – Group 4 Compression
- Single page TIFF – Uncompressed Image Format
- MO:DCA
- JPG – JPEG Compression
- PCX – PackBytes Compression
- Kofax PDF
- Adobe PDF from TIFF
- Adobe PDF from JPEG
- Adobe PDF from PCX

Kofax PDF

With the IBM DB2 Content Manager release script, you can release Kofax PDF documents into your DB2 Content Manager system. Kofax PDF is bundled with Ascent Capture and does not require additional software implementation. Kofax PDF documents can be saved in the following output types:

- PDF Image Only
- PDF Image + Text

Note If you want to use PDF Image + Text, you must acquire additional licensing from Kofax Image Products.

Refer to *Kofax PDF Options* on page 12 for more information about Kofax PDF documents.

Adobe PDF Support

The IBM DB2 Content Manager release script supports releasing Adobe PDF documents into your DB2 Content Manager system. The software is provided by Adobe Acrobat Capture and is not included with the Ascent Capture product. To release Adobe PDF documents, you must install the Adobe® Acrobat Capture® 3.0 Clustered or Personal Edition software.

Refer to *Adobe Acrobat Capture Options* on page 13 for more information about Adobe PDF documents.

OCR Full Text Support

With this release script, you can release documents processed through the Ascent Capture OCR Full Text module into your DB2 Content Manager system.

Refer to *OCR Full Text Options* on page 11 for more information about OCR full text files.

Miscellaneous Issues

Unsupported Ascent Capture Features

File Name Retention

This release script does not support file name retention. Therefore, the original imported file name will not be retained and the default numeric name will be used.

If you have enabled the “Use the original file name of image and eDocument files” check box in the Ascent Capture Release Properties dialog box and you release a batch in Content Manager, the release will fail with the following error message. (SPR 30293)

The specified file does not exist.

In addition, if you set the “SupportsOriginalFileName” property to “True” (SupportsOriginalFileName=True) in IBM DB2 Content Manager and you release a batch, the release will fail with the same error message.

Refer to your Ascent Capture Help for more information about retention of file names. (Ascent Capture Help keyword: *Release Properties dialog box*)

Tip The Ascent Capture Value “{First Page Original File Name}” allows you to retain the original file name for the first page of a document. This value can be linked to Content Manager attributes that support Ascent Values. Notice that the Content Manager attribute type must be able to accept all the characters that are part of the original file name and must not exceed the defined length or release may fail.

Text Searching Options

Images and eDocuments

The “Make documents text-searchable” check box as specified on the General Settings tab, enables the text-searchable feature.

To make your documents text-searchable, you must install the IBM Net Search Extender (NSE) on your server. In addition, the item type should be set to text searchable and the ICMBASETEXT part must be included in the document parts.

NSE is formerly known as the Text Information Extender (TIE) in previous versions.

NSE text indexing supports the following image formats:

- Excel
- HTML
- PDF
- Text
- Word
- XML

Refer to the documentation that came with your DB2 Content Manager product for more information about setting up item type parts using NSE.

OCR Full Text

To release OCR Full text files with the “Make documents text-searchable” option enabled, the selected item type must contain the ICMBASE and ICMBASETEXT parts. The item type should be set to text searchable. To release OCR full text files as part of the image, a semantic type named "KofaxOCR" must be created on the Content Manager server. (SPR 30343)

Refer to the documentation that came with your DB2 Content Manager product for more information about setting up item type parts using NSE.

PDF Documents

To release PDF documents with the “Make documents text-searchable” option enabled, the selected item type must contain the ICMBASETEXT parts. The item type should be set to text searchable and contain the ICMfetchFilter. (IBM PMR# 93948; SPR 30457)

Refer to the documentation that came with your DB2 Content Manager for more information about setting up item type parts using the NSE.

{Index Operator’s Station ID} Ascent Capture Value

The Ascent Capture Value {Index Operator’s Station ID} has been deprecated, and replaced by {Validation Operator’s Station ID}. It is strongly recommended that you use {Validation Operator’s Station ID} instead.

eDocument Names Not Preserved at Release

Ascent Capture releases eDocuments in the same manner as images. This means that the original name of the eDocument is modified and becomes a part of the image-naming scheme. Note, however, that the original eDocument file extension is preserved and used in the final name.

Multi-value Separator Option

The Multi-value separator option as specified on the General Settings tab, allows you to enter only valid printable ASCII characters. This option cannot contain the following characters:

- Carriage return
- Escape
- New line
- Space
- Tab

Warning The Multi-value separator should not be part of your value. For example, if you specify a period (.) as one of your values and you specify the period as the Multi-value separator, the release script will assume the value is the separator.

Searching for Folder Child Component Attributes

This release script does not support searching for folder child component attributes. Therefore, if you perform a search based on the root attributes only, the values for the child components will be lost when the search routine finds an existing folder. This occurs because the existing folder is not updated at release. To avoid this, you will need to ensure that new folders are created at release time. You can do the following:

- Use root attribute values that are unique and do not already apply to existing folders in the IBM DB2 Content Manager system.
- Clear all the Search check boxes, which will force the release script to create a new folder.

Sharing Data Among Release Scripts

The Ascent Capture Release Script Information Interchange feature is useful when more than one release script has been configured for a particular batch class and document class combination.

The sharing of information is accomplished by allowing the release scripts to pass information to other release scripts. The Ascent Capture Value {Repository Document ID} is used to store and retrieve the RepositoryDocumentID that will be used by the first invoked release script. Therefore, the first release script that runs can set this value, and subsequent release scripts can read the same value.

Notice that when you are passing the RepositoryDocumentID information to a different release script, the release script must exist within the same document class using multiple release. In addition, the release script that is passing the RepositoryDocumentID information must be placed first in the list on the Release Scripts dialog box. For example:

```
IBM DB2 Content Manager 8.1-8.2
Ascent Capture Text
```

Only the first release script can set the RepositoryDocumentID value. Subsequent release scripts can only read this value.

Note Release scripts that use the Ascent Capture Release Script Information Interchange feature will not be compatible with versions of Ascent Capture prior to 6.1.

Refer to your Ascent Capture Help for more information about configuring the RepositoryDocumentID. You can display Ascent Capture Help from the Help menu available from any Ascent Capture module. Alternatively, you can click Start | Programs | Ascent Capture | Ascent Capture Help.

Invalid Characters

The IBM DB2 Content Manager release script will not allow the following characters at validation. Content Manager data types are validated during release setup and release.

Table 1. Invalid Characters

Content Manager CHAR and VARCHAR Data Types	Invalid Characters	
Alphabetic	0 - 9 Ampersand (&) Apostrophe (') Asterisk (*) At sign (@) Backslash (\) Braces ({}) Brackets ([]) Circumflex (^) Closing Parenthesis) Colon (:) Comma (,) Dash (-) Dollar sign (\$) Double quotation marks (""") Equal sign (=) Exclamation point (!)	Grave accent (`) Greater than sign (>) Less than sign (<) Number sign (#) Opening Parenthesis (Parentheses () Percent sign (%) Period (.) Pipe () Plus sign (+) Question mark (?) Quotation marks ("") Semicolon (;) Slash mark (/) Space character () Tilde (~) Underscore (_)
Numeric	Any character outside of 0 - 9.	
Alphanumeric	Ampersand (&) Apostrophe (') Asterisk (*) At sign (@) Backslash (\) Braces ({}) Brackets ([]) Circumflex (^) Closing Parenthesis) Colon (:) Comma (,) Dash (-) Dollar sign (\$) Equal sign (=) Exclamation point (!) Grave accent (`)	Greater than sign (>) Less than sign (<) Number sign (#) Opening Parenthesis (Parentheses () Percent sign (%) Period (.) Pipe () Plus sign (+) Question mark (?) Quotation marks ("") Semicolon (;) Slash mark (/) Space character () Tilde (~) Underscore (_)
Extended Alphanumeric	Backslash (\) Braces ({}) Brackets ([])	Grave accent (`) Tilde (~)
Other	No data type validation is performed.	

OCR Full Text Options

This release script allows you to select OCR full text options at release setup time. For example, you can specify that you want to release OCR full text files as part of the image or as the base of a released document. The OCR Full Text options for the release script are available on the General Settings tab.

Note The options for releasing OCR full text files require various Content Manager item type settings. Refer to *Appendix B – Quick Reference for Releasing OCR Full Text Files* on page 41 for a quick reference chart of the item type requirements for releasing OCR full text files. The chart also includes a description of how the document parts are stored in Content Manager, based on the OCR full text options.

To release OCR full text files, you must also enable Ascent Capture OCR full text processing in your applicable document class and add the OCR Full Text module to your applicable document class/batch class.

► **To enable OCR full text processing for a document class**

- 1 From the Create Document Class dialog box or Document Class Properties dialog box, select the OCR tab.
- 2 Check the Enable OCR full text check box to enable OCR full text processing for the document class.
- 3 Click Apply to save your settings without closing the dialog box. Click OK to save your settings and close the dialog box.

► **To add the OCR Full Text module to a batch class**

- 1 From the Create Batch Class dialog box or Batch Class Properties dialog box, select the Queues tab.
- 2 Select OCR Full Text from the list of Available Queues, and click Add.
- 3 Click Apply to save your settings without closing the dialog box. Click OK to save your settings and close the dialog box.

For more information about OCR full text processing, refer to the *Getting Started with Ascent Capture* guide.

Kofax PDF Options

To release Kofax PDF documents, you must enable Ascent Capture Kofax PDF generation in your applicable document class and add the Kofax PDF Generator module to your applicable batch class.

Note If you want to use PDF Image + Text, you must acquire additional licensing. For more information, contact your Kofax Certified Solution Provider.

► **To add the Kofax PDF Generator module to a batch class**

- 1 From the Create Batch Class dialog box or Batch Class Properties dialog box, select the Queues tab.
- 2 Select PDF Generator from the list of Available Queues, and click Add.
- 3 Click Apply to save your settings without closing the dialog box. Click OK to save your settings and close the dialog box.

► **To enable Kofax PDF generation for a document class**

- 1 From the Create Document Class dialog box or Document Class Properties dialog box, select the General tab.
- 2 Check the Enable Kofax PDF generation check box to enable Kofax PDF processing for the document class.
- 3 Click Apply to save your settings without closing the dialog box. Click OK to save your settings and close the dialog box.

For more information about the Kofax PDF Generator module, refer to the *Getting Started with Ascent Capture* guide.

Adobe Acrobat Capture Options

The IBM DB2 Content Manager release script supports Adobe Acrobat Capture. This section contains information related to using Adobe Acrobat Capture for your Adobe PDF documents.

For additional details about creating Adobe PDF documents, refer to your Adobe Acrobat Capture documentation.

Operating System Requirements for Ascent Capture

To release Adobe PDF documents, your Ascent Capture Administration and Release workstations must be running on Windows XP or Windows 2000. Windows 95, Windows 98, Windows Me, and Windows NT are not supported operating systems for Ascent Capture.

Adobe Acrobat Capture and the Ascent Capture Release Workstation Installations

During the conversion process, communication must occur between Adobe Acrobat Capture and the Ascent Capture Release module. However, due to timing conflicts, Adobe Acrobat Capture and Ascent Capture cannot be run at the same time on a workstation. Therefore, Adobe Acrobat Capture and Ascent Capture must be installed on separate workstations on the same LAN.

Workflow Steps

For complete image conversion for Formatted Text & Graphics or Searchable Image page content, a basic Adobe Acrobat Capture workflow needs to contain at least four steps, in the following order:

- 1 Capture Image
- 2 Bind Pages
- 3 Export to PDF
- 4 Store File (PDF)

For complete image conversion for Image Only page content, the Adobe Acrobat Capture workflow needs to be called “PDF Image Only” and contain at least three steps, in the following order:

- 1 Convert Image to PDF
- 2 Combine PDFs
- 3 Store File (PDF)

Note When creating workflows, do not include manual steps such as Quick Fix Page, Review Document, and Zone Images. If you do, Adobe Acrobat Capture will stop running when it encounters any of these steps and require manual processing by the user. This kind of workflow is not suitable for Ascent Capture Release because it disrupts the automated process of releasing Adobe PDF documents.

Multipage TIFFs

If you are releasing multipage TIFFs, you must use the Split Multipage TIF step in your Adobe Acrobat Capture workflow.

Releasing from Multiple Ascent Capture Standalone Workstations

If you use multiple Ascent Capture standalone workstations and one Adobe Acrobat Capture hub, you must create unique Adobe Acrobat Capture “workflows” and “watched folders” for each Ascent Capture standalone workstation. This is because Adobe Acrobat Capture uses Ascent Capture document IDs for its document-naming scheme. Since standalone Ascent Capture document IDs may not be unique, the document names could conflict in Adobe Acrobat Capture and cause the release process to fail.

Re-releasing Documents in Error

If an Adobe Acrobat Capture error occurs during the release process, you must clear your Adobe Acrobat Capture finished documents and cancel any hung documents before re-releasing the same documents in Ascent Capture.

Invalid Watched Folders

If you attempt to release documents to an invalid Adobe Acrobat Capture watched folder, the documents will be rejected. To cancel the release, click Cancel on the Ascent Capture PDF Release dialog box displayed at the Release workstation. The Cancel button will automatically cancel the Adobe Acrobat Capture documents.

Installing the Release Script

You can install the IBM DB2 Content Manager release script on an Ascent Capture client or standalone workstation.

Important Note About Installation

To install the IBM DB2 Content Manager release script, you must have Windows administrator privileges. If you do not have administrator privileges and install this release script, you may receive error messages and several of the files may not install correctly.

Installation Instructions

► **To install the release script**

- 1 Insert your Ascent 6.1 Release Script for IBM DB2 Content Manager for Multiplatforms installation CD into your CD drive.
- 2 From your Windows task bar, select Start | Run, browse to the IBM\CM8 folder on the CD, and run Setup.exe. The installation program will start.
- 3 Follow the instructions on the screen to install the release script.
- 4 When the installation is complete, a message will display that indicates the release script was successfully installed.

Note Installing the release script automatically registers it with Ascent Capture.

- 5 Repeat this procedure on all Administration and Release workstations that will use the Content Manager release script.

Note To release batches from Ascent Capture with the IBM DB2 Content Manager release script, you must activate the system license for this release script. Refer to *Licensing* on page 19 for more information about activating the release script license.

Upgrading the Release Script

If you are currently using Ascent Capture for Content Manager version 5.51, 5.61, 5.71, Ascent Capture 6.0 Release Script for IBM Content Manager, or Ascent Capture 6.05 Release Script for IBM Content Manager, you can upgrade to the IBM DB2 Content Manager release script, if desired.

Upgrade Instructions

► **To upgrade the release script**

- 1 Release any existing batches associated with the release scripts. For more information see *Releasing Batches* on page.
- 2 From the Definitions panel in the Administration module, select the Batch class tab and right-click the applicable document class associated with the release script. (Expand the batch class item to select associated document classes.) A context menu will display.
- 3 From the context menu, select “Release Scripts.” The Release Scripts dialog box will display.
- 4 From the Release Scripts dialog box, ensure that the older version of the Content Manager release script is selected from the list of Assigned Release Scripts (on the right-hand side of the screen). Then, select the new IBM Content Manager 8.1–8.2 release script from the list of Available Release Scripts (on the left-hand side of the screen).
- 5 Click Upgrade. When you are prompted to confirm that you want to upgrade, click Yes.

Once you have upgraded, you should log on to the IBM DB2 Content Manager release script and verify that all of the settings are correct.

Before you can use the upgraded release script, you must republish the associated batch class. Refer to *Publishing a Batch Class* on page 29 for instructions.

Note It is recommended that you run some sample batches through the system to test the operation of the release script.

Application Maintenance

This section describes how to repair and remove the IBM DB2 Content Manager release script.

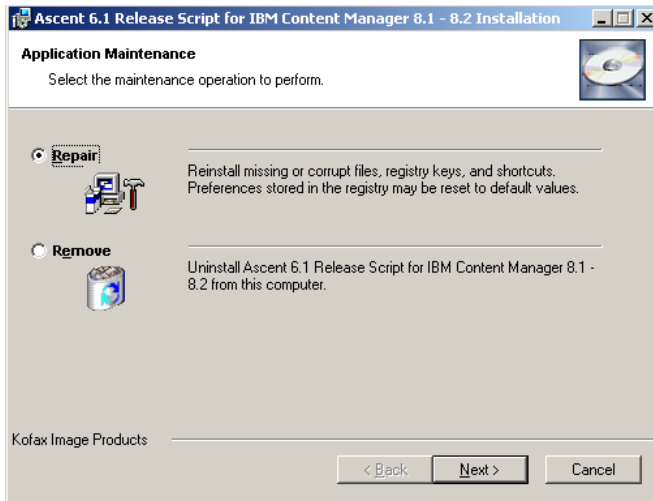


Figure 1. Application Maintenance Dialog Box

Repairing the Release Script

The repair option replaces missing, renamed, or deleted files.

► To repair the release script

- 1 Insert your Ascent 6.1 Release Script for IBM DB2 Content Manager for Multiplatforms installation CD into your CD drive.
- 2 From your Windows task bar, select Start | Run, browse to the IBM\CM8 folder on the CD, and run Setup.exe.
- 3 Setup will detect an existing installation and the Application Maintenance dialog box will display, as shown in Figure 1.
- 4 From the Application Maintenance dialog box, select “Repair” and then click Next.
- 5 Follow the instructions on the screen to repair the release script.
- 6 When the repair is complete, a message will display that indicates the release script was successfully installed.

Removing the Release Script

The remove option will delete the release script.

► To remove the release script

- 1 Insert your Ascent 6.1 Release Script for IBM DB2 Content Manager for Multiplatforms installation CD into your CD drive.
- 2 From your Windows task bar, select Start | Run, browse to the IBM\CM8 folder on the CD, and run Setup.exe.
- 3 Setup will detect an existing installation and the Application Maintenance dialog box will display, as shown in Figure 1 on page 17.
- 4 From the Application Maintenance dialog box, select “Remove” and then click Next.
- 5 Follow the instructions on the screen to delete the release script.
- 6 When the uninstallation is complete, a message will display that indicates the release script was successfully uninstalled.

Alternatively, you can use Add/Remove Programs utility from the Windows Control Panel to uninstall the Content Manager release script.

Refer to your Microsoft documentation for more information about the Add/Remove Programs utility.

Note After uninstalling, the IBM DB2 Content Manager release script will continue to display in the Release Script Manager, although it will not be functional. To remove the release script from the Release Script Manager, you must go into every batch class and associated document class, select the applicable release script from the Assigned Release Scripts list and click Remove. You must do this for every instance of the IBM DB2 Content Manager release script. After all references to the release script are removed, you will be able to delete the IBM DB2 Content Manager release script from the Release Script Manager.

Licensing

Ascent Capture supports a centralized license management scheme that requires a hardware key on the Ascent Capture server, and on standalone installations. Client workstations do not require hardware keys to run Ascent Capture, including release scripts.

Once you install your release script, you may need to activate a system license for the script using the License Utility installed with Ascent Capture. The License Utility allows you to view the status of licenses, as well as activate new or additional licenses for your Ascent Capture system.

Ascent Capture Evaluation License

If you obtained an Ascent Capture Evaluation License from Kofax Image Products, the release script license will not display in the License Utility. However, the Ascent Capture Evaluation License will display in the License Utility in the System Licenses area. The Evaluation License allows you to run all modules, including the release script for the evaluation period.

For more information about the Ascent Capture Evaluation License, see the Ascent Capture Help (Ascent Capture Help keyword: *Licensing > license types*).

Note For more information about the Ascent options purchased for your company, contact your system administrator or Kofax Certified Solution Provider. If Internet access is not available, you must acquire an activation code from your Certified Solution Provider or the Kofax Web site before you attempt to activate.

Activating the Release Script License

You can run the Ascent Capture License Utility on any station in your Ascent Capture system.

You can check the Ascent Capture License Utility to see if the installation process automatically sets the name for the release script license. If the release script name is not displayed, then you will need to activate the system license.

System Licenses		Expiration Date	
Ascent 6.x Release Script for IBM Content Manager 8.1 - 8.2		(none)	
Ascent Capture Enterprise		(none)	
Ascent Capture Internet Server		(none)	
SQL Server Deployment		(none)	

Station Licenses	Available	Maximum	Expiration Date
PDF Generator Image + Text Upgrade	1	1	(none)
Scan/Import	1	1	(none)

Volume Licenses	Remaini...	Full Count	Renewal Date
Scan/Import page count - one time use	4906	5000	(none)
Scan/Import page count - yearly	4894	5000	1/1/2004

For Help, press F1 Ascent Serial Number: AC05782 00:03

Figure 2. Ascent Capture – License Utility Dialog Box

Note For easiest activation, it is recommended that you run the Ascent Capture License Utility on a workstation with Internet access. If Internet access is not available, you must acquire an activation code from your Certified Solution Provider or the Kofax Web site before you attempt to activate.

► **To activate the release script license**

- 1 Start the Ascent Capture License Utility. The module's main screen will display.
- 2 From the License Utility's menu bar, select File | Activate. The Activate dialog box will display.

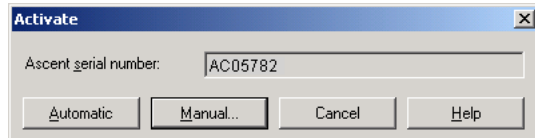


Figure 3. Activate Dialog Box

- 3 Click Automatic. An activation code is acquired directly from Kofax Image Products and the license will be activated.

Note "Automatic" activation requires Internet access. If the workstation does not have Internet access, you can click "Manual" to manually activate the license. Click Help for more information on the Activate dialog box.

- 4 To refresh the License Utility display status, select View | Refresh. The release script license will display in the System Licenses area, as shown in Figure 2 on page 19.

For more information about the Ascent Capture License Utility, see the Ascent Capture Help (Ascent Capture Help keyword: *License Utility > about*).

Logging on to the Release Script

Once you have associated a document class with a batch class in Ascent Capture, you may specify the release script to use when releasing your images, eDocuments, OCR full text files, PDF documents, and index data.

► To log on to the release script

- 1 Start the Ascent Capture Administration module. The module's main screen will display.
- 2 Select the Batch class tab from the Definitions panel, and right-click the applicable document class. (Expand the batch class item to select associated document classes.) A context menu will display.
- 3 From the context menu, select "Release Scripts." The Release Scripts dialog box will display.

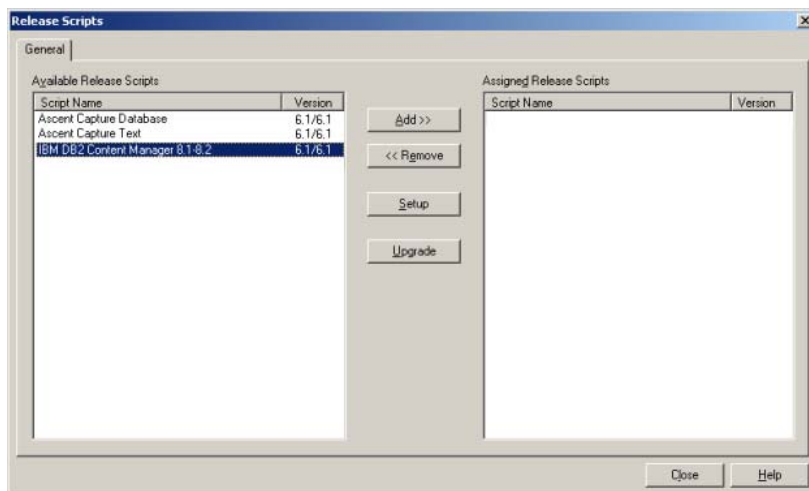


Figure 4. Release Scripts Dialog Box

- 4 The Release Scripts dialog box lists all available release scripts. From the Release Scripts dialog box, select the IBM DB2 Content Manager 8.1–8.2 release script and click Add. The Ascent Capture Content Manager Login Information dialog box will display, as shown in Figure 5 on page 22.
- 5 Enter your IBM DB2 Content Manager user name, password and select the DB2 Content Manager library server. The Library Server combo box lists all the available DB2 Content Manager library servers obtained from the Network Table file. This information will be used to log on to the DB2 Content Manager system.

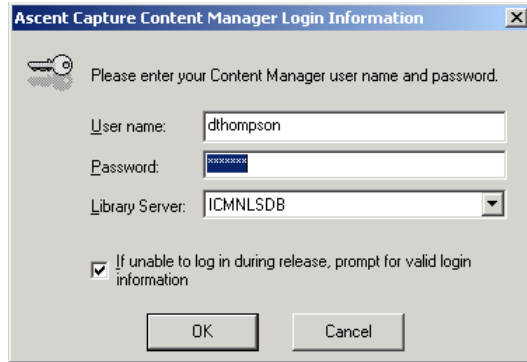


Figure 5. Ascent Capture Content Manager Login Information Dialog Box

Note The login information will be saved and used during release.

- 6 To prompt for a user ID and password if the release script is not able to log on to IBM DB2 Content Manager at release time, select the “If unable to log in during release, prompt for valid login information” check box.
 - If selected and there is a problem logging on to the IBM DB2 Content Manager release script, the Ascent Capture Content Manager Login Information dialog box will appear during release. The user may then enter valid login data and click OK. However, if the user clicks Cancel, the release will fail and the batch will be routed to the Ascent Capture Quality Control module.
 - If not selected and problems occur when logging on to the IBM DB2 Content Manager release script, the Ascent Capture Content Manager Login Information dialog box will not display during release. Release will fail and the batch will be routed to the Ascent Capture Quality Control module.

Note Do not select this feature if you plan to run the Ascent Capture Release module as a service or if you plan to run the Release module during off-hours. The Ascent Capture Content Manager Login Information dialog box requires a user response, which interferes with the automated nature of running the Release module as a service or without operator attention.

- 7 Click OK. The Ascent 6.1 for IBM DB2 Content Manager 8.1-8.2 – Release Setup dialog box will display, as shown in Figure 6 on page 23.

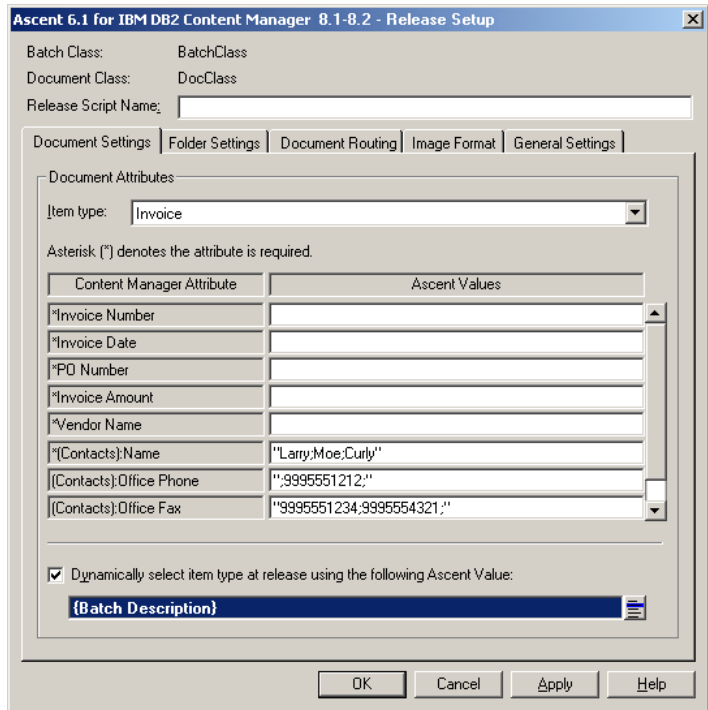


Figure 6. Ascent 6.1 for IBM DB2 Content Manager 8.1-8.2 – Release Setup Dialog Box

- 8 Refer to the next section, *Setting Up the Release Script*, for information about the set up options.

Setting Up the Release Script

The following sections describe the setup options available with the IBM DB2 Content Manager release script.

Note For more details about the setup options, refer to the Help available from the Ascent 6.1 for IBM DB2 Content Manager 8.1-8.2 – Release Setup dialog box.

Document Settings Tab

This tab allows you to select from a list of available Content Manager item types for documents to be released. In addition, this tab allows you to link Ascent Values, Index and Batch fields, and Text Constants to Content Manager attributes. You can optionally assign a dynamic item type to the document.

Ascent 6.1 for IBM DB2 Content Manager 8.1-8.2 - Release Setup

Batch Class: BatchClass
 Document Class: DocClass
 Release Script Name: _____

Document Settings | Folder Settings | Document Routing | Image Format | General Settings

Document Attributes

Item type: Invoice

Asterisk (*) denotes the attribute is required.

Content Manager Attribute	Ascent Values
*Invoice Number	
*Invoice Date	
*PO Number	
*Invoice Amount	
*Vendor Name	
{(Contacts);Name}	"Larry,Moe;Curly"
{(Contacts);Office Phone}	"9995551212;"
{(Contacts);Office Fax}	"9995551234;9995554321;"

Dynamically select item type at release using the following Ascent Value:
 {Batch Description}

OK Cancel Apply Help

Figure 7. Document Settings Tab

Folder Settings Tab

This tab allows you to specify new or existing folders to use for storing documents in the IBM DB2 Content Manager system. In addition, you can specify a Content Manager item type to use for assigning Content Manager attribute values to folders in the folder hierarchy. You can also specify which attributes can be used as search attributes when searching for pre-existing folders in Content Manager, and you can optionally assign a dynamic item type to each folder.

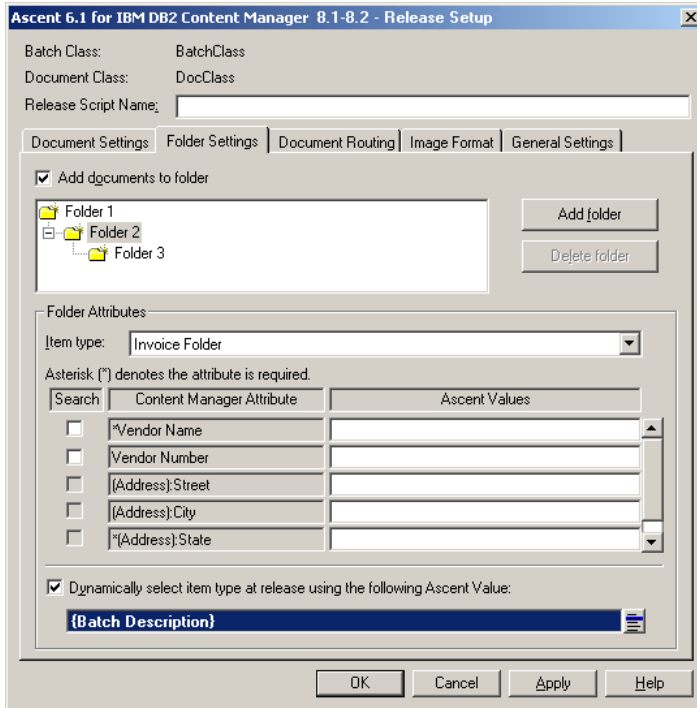


Figure 8. Folder Settings Tab

Document Routing Tab

This tab allows you to route released documents or route the parent folder for the current folder to the IBM DB2 Content Manager processes. You have the option of either defining static processes or defining dynamic processes. In addition, you can assign priorities for the processes.

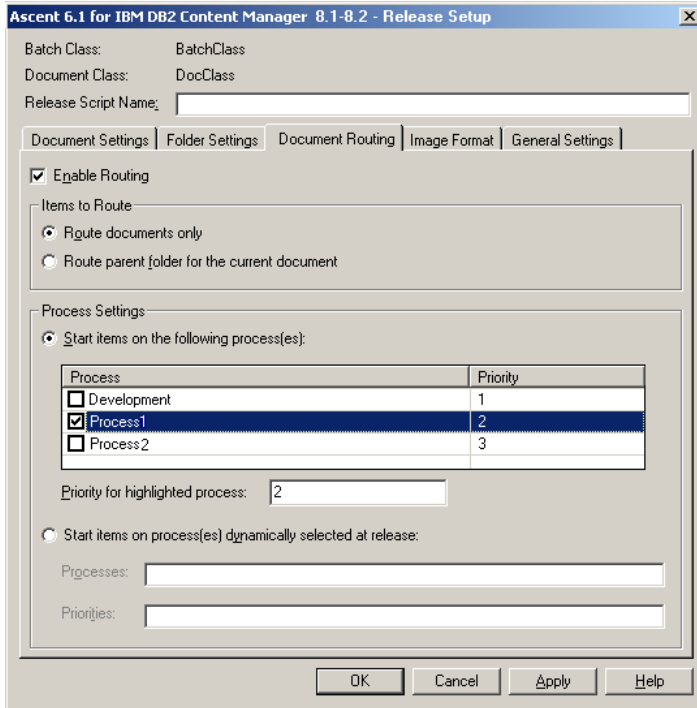


Figure 9. Document Routing Tab

Image Format Tab

This tab allows you to specify the desired image format for releasing your images. If Adobe PDF is selected as an image type, the PDF Settings on this tab will become available for selection.

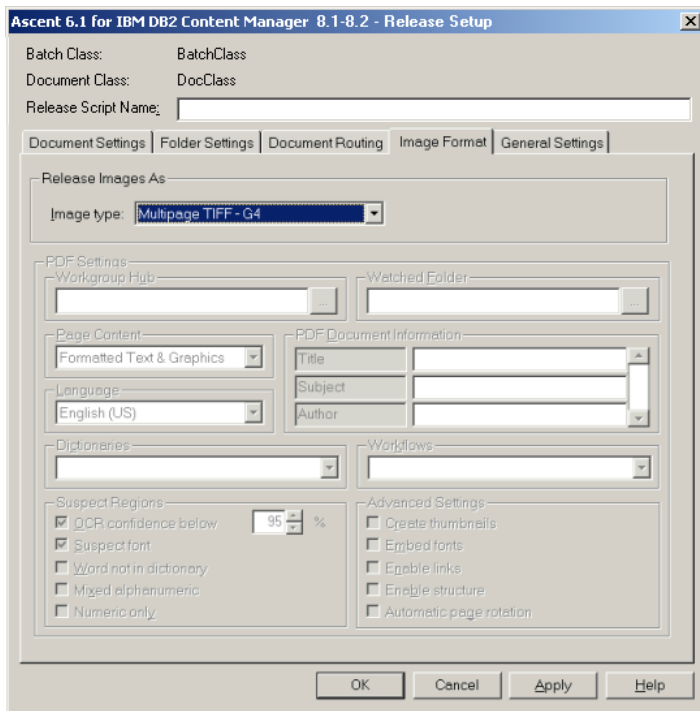


Figure 10. Image Format Tab

General Settings Tab

This tab allows you to set a release working directory to use as a temporary storage location to be used at release time. In addition, you can specify whether to skip the first page of each document, indicate whether to make documents text-searchable, search the entire repository for the first folder, specify a multi-value separator, and identify OCR full text options.

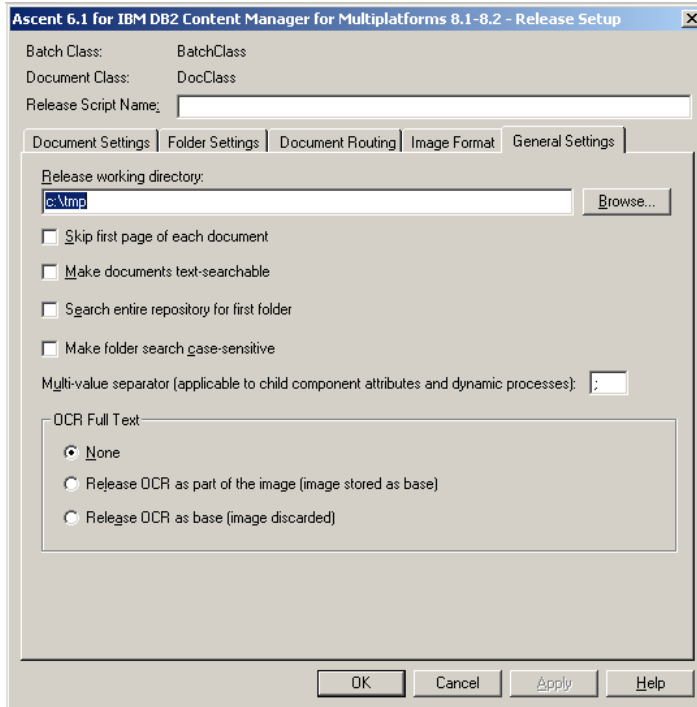


Figure 11. General Settings Tab

Publishing a Batch Class

After you select all your batch class settings, you must publish your batch class before you can use it. The publishing process checks the integrity of the settings in your batch class, and makes the batch class available for use. If problems are found with any of the settings, error and warning messages will display along with the recommended actions for fixing the problems.

If you ever decide to edit your batch class, you must publish your batch class again before your changes can be used. Your changes will not be applied to batches created before the new publication date.

► To publish a batch class

- 1 Start the Ascent Capture Administration module. The module's main screen will display.
- 2 Select the Batch class tab from the Definitions panel, and right-click the applicable batch class. A context menu will display.
- 3 From the context menu, select "Publish." The Publish dialog box will display.
- 4 From the Publish dialog box, select your batch class and click Publish. Ascent Capture will check all of your batch class settings and display the results in the Results box.
 - a If no problems are detected, the message "Publishing successful" will display.
 - b If problems are detected, warning/error messages will display along with the recommended actions to resolve the problems. Perform the recommended actions, and then try to publish the batch class again.
- 5 Run some sample batches through the system to test the operation of the release script.

After successfully publishing, you can create batches based on your batch class. As your batches flow through your Ascent Capture system, they will be routed from module to module. The modules that are used to process a batch, and the order that processing occurs, are specified as part of the batch class definition for the batch.

For more information about batch classes, see the Ascent Capture Help (Ascent Capture Help keyword: *Batch classes > about*).

Releasing Batches

With the IBM DB2 Content Manager release script, the Ascent Capture Release module will process batches based on the settings of the associated batch classes. The Release module is responsible for releasing documents, as well as index data using the attributes defined during release setup.

Note To release to Content Manager, the logged in user must have permissions to add/read folders and add documents to Content Manager. If items are to be started on a process, the user must have those permissions as well. Contact your DB2 Content Manager system administrator for assistance.

At release, all pages that belong to a document will be stored in Content Manager as *parts*. All parts use the same Content Manager attributes, allowing a logical association of all pages in the document. This includes document images, eDocuments, OCR full text files, and PDF documents.

Note Document images, eDocuments, and PDF files are stored as ICMBASE parts. OCR full text files are stored as ICMBASETEXT. eDocuments will also be stored as ICMBASETEXT when the option "Make documents text-searchable" is enabled on the General Settings tab.

The Ascent Capture Release module usually runs as an unattended module on a Windows workstation, periodically polling the Release module for available batches. The Release module may be configured to run during off-hours to avoid any impact to the throughput of Ascent Capture and/or the network system. To start the Release module, select Start | Programs | Ascent Capture | Release. All batches queued for release will be released after initiation of the Release module.

Note Refer to your Ascent Capture Help for more information about configuring the Release module (Ascent Capture Help keyword: *Release module > about*). You can display Ascent Capture Help from the Help menu available from any Ascent Capture module. Alternatively, you can click Start | Programs | Ascent Capture | Ascent Capture Help.

► To release a batch

- 1 Start the Ascent Capture Release module. The module's main screen will display. Any batches waiting to be released will be processed.
- 2 Once your batch is released, it will be removed from Ascent Capture. If any documents or pages are rejected, the batch will be routed to the Ascent Capture Quality Control module. If successful, each document's item ID number will display in the Release module event log.
- 3 When you want to exit the Release module, select Batch | Exit from the Release module's menu bar.

Known Problems

This section contains information about known problems with the IBM DB2 Content Manager release script.

Problems When Installing on Windows XP

If you are installing the IBM DB2 Content Manager release script on a Windows XP Professional workstation and you specify a mapped drive, you will receive the following error message. (SPR 31250)

Error 1904. Module <mapped drive> failed to register. HRESULT -2147467259. Contact your support personnel.

Workaround: The error message is incorrect and can simply be ignored. Click the Ignore button and the release script will successfully install and register the release script.

If you click the Abort button, the installation will end. If you click the Retry button, you will receive the above error message again.

Problems When Uninstalling the Release Script

If you click the Cancel button while you are uninstalling the release script, all the release script original files will remain properly installed on the system. However, depending on the point during the uninstallation that the Cancel button is clicked, the release script may be un-registered. In such a case, once you attempt to login to the release script, login will fail. (SPR 31221)

Workaround: If this problem occurs, run Repair. Refer to *Repairing the Release Script* on page 17 for more information. Alternatively, you can re-register the release script in the Release Script Manager.

Required BLOB and CLOB Attributes Not Supported

This release script does not support item types that contain required BLOB or CLOB attributes. If you attempt to use such item types, no error or warning message will be generated at release setup. However, the batches will fail at release and you will receive the following error message. (SPR 27764)

0, DGL3617A: An attribute value is required; ICM7016: A request to create or update an item or component record was made, but no value was provided for an attribute that is defined as NOT NULL. Modify the application to require a value for any NOT NULL attributes.

Workaround: Do not use item types that contain required BLOB or CLOB attributes. If you do, your batches will fail at release. If this occurs, you must delete your batches, edit your setup settings to use item types that do not contain required BLOB or CLOB attributes, and then re-create your batches.

Problems with Releasing High Volumes of Documents

To release high volumes of documents, you must manually change the configuration information in the Content Manager `httpd.conf` file. The fix is described on page 9 of the Content Manager 8.1 readme file and on page 45 of the Content Manager 8.2 readme file. For your convenience, the text from the Content Manager 8.1 readme file concerning this issue is shown below.

Note Refer to the Content Manager readme file for additional details. If you need a copy of the Content Manager readme file, contact your IBM Content Manager representative.

4.3 Content Manager Resource Manager *(text from the Content Manager readme file)*

Connection closed when retrieving, storing, or updating objects. When retrieving, storing, or updating objects using IBM HTTP Server on Windows, you might receive an error indicating that the connection is closed.

Workaround: To avoid this error, you must shut down IBM HTTP Server and edit the `httpd.conf` file. You do not need to stop WebSphere Server. In the `httpd.conf` file, comment out all `Afpa` lines. For example:

```
#AfpaEnable
#AfpaCache on
#AfpaLogFile "C:/IBM HTTP Server/logs/afpalog" V-ECLF
```

Next, add the line:

```
Listen 80
```

Save and close the file and restart the IBM HTTP Server.

Releasing PDF Documents Using Ascent Capture Multiple Release Feature

When releasing PDF documents with the Ascent Capture multiple release feature, the batch may occasionally fail. (SPR 27799)

Workaround: Unreject your batch in the Ascent Capture Quality Control module and process the batch again to release it.

MIME Types Must Exist in Content Manager

When releasing an eDocument with a MIME type that does not exist on the Content Manager server, an error similar to the following will occur and the eDocument will be rejected. (SPR 28153 and SPR 28252)

```
Method '-' of object '-' failed.
```

Workaround: Add the MIME-compliant application that you need to your Content Manager system (for instance, you will need to install the Microsoft Excel software to open XLS MIME types). Once the applicable MIME types exist in Content Manager, you can unreject the document and re-release it.

Note To release eDocuments, the MIME types for the eDocuments must be in lowercase letters on your Content Manager system. Contact your Content Manager administrator for more information about adding MIME types.

User-Defined Ranges for Document Attribute Values

Range checking is not performed in all cases at release setup or release for Ascent Values linked to document attributes for which user-defined ranges have been specified in Content Manager. At release, if an Ascent Value falls outside of the valid range for a document attribute, the following will occur:

For Long/Short Integer Data Types (SPR 27524):

- Long or Short integer values that fall outside of the range specified in Content Manager will retain their values and will be released into Content Manager. No warning or error message will be generated.

For CHAR and VARCHAR Data Types (SPR 28034):

- VARCHAR values with lengths that are less than the minimum allowed length will be released into Content Manager. No warning or error message will be generated.
- CHAR and VARCHAR values with lengths that exceed the maximum allowed length will generate the following error message at release:

The size of the attribute *<attribute name>* specified *<attribute size>* is greater than the size *<maximum length>* specified in the item type definition.

Workaround: If this problem occurs, adjust your values so that they fall within the allowed length or range, and then re-release the batch. If this is not possible, delete the batch in error in Batch Manager. When linking Ascent Values to Content Manager document attributes during release setup, make certain that you know the valid ranges for values. Then, only link Ascent Values that are valid for the attributes.

Performance Issues with Folders

Release will slow down when releasing to folders. The more nested folders you have in your release path, the slower the performance will be. Please contact your IBM Content Manager representative for details on optimizing your database.

Releasing Single Page TIFFs

If you are having problems releasing documents as single page TIFFs, make sure that you have the latest Fix Packs from IBM. Releasing numerous images may cause the release to fail with the following parsing error message. (IBM PMR #30284,004; Kofax SPR 28201)

```
Internal error occurred; an error occurred during parsing Return Code: 7047 Element ID: 129
```

In certain circumstances, release will succeed when releasing a large volume of documents; however, you will not be able to view the documents in the IBM Viewer. No error message is generated. (IBM PMR 68522,756; Kofax SPR 28201)

This is due to a problem with IBM Content Manager.

Workaround: Use multipage TIFFs instead.

Releasing Date Fields

When releasing Date fields, you must use the forward slash (for example, *YYYY/MM/DD*). If you use a point separator (for example, *YYYY.MM.DD*) or the German date format (*DD.MM.YYYY*), release setup will not notice that you entered an invalid format for a text constant and will allow you to save your settings. The IBM DB2 Content Manager release script is not able to validate the Date fields at release when point separators are used. The documents will fail at release. (SPR 27094)

Workaround: Make certain that the settings you specify at release setup do not yield dates with point separators. In addition, make certain that the date format is *YYYY/MM/DD*, where *YYYY* is the year, *MM* is the month, and *DD* is the day of the month. If necessary, you can write a custom validation script that checks the date format when batches are processed with the Validation module, and adjusts the format as necessary.

Releasing eDocuments with 0 Bytes

If you are releasing eDocuments, your eDocument files must be larger than 0 bytes or the release will fail with the following error message. (SPR 28173)

```
An unexpected SQL error occurred; ICM7015: During an SQL operation in the library server, an unexpected error occurred. For details on the error, from a DB2 command prompt enter DB2?SQLnnnn. (STATE): [LS RC=7015. SQL RC=-180]
```

Workaround: Make certain that you do not create batches with eDocuments of 0 bytes.

Scanning Non-Image Documents

If you enable the “Release OCR as base (image discarded)” option on the General Settings tab and use the Kofax Advanced OCR Full Text Recognition profile for the document class properties, you will receive the following error message while scanning in non-image documents. (SPR 30456)

```
You have selected to release OCR Full Text as base, but this document does not contain OCR Full Text files.
```

On the other hand, if you use the Kofax OCR Full Text Recognition profile for the document class properties, you will not receive an error.

Upper ASCII Character Limitations

When you have Unicode enabled on your system, Content Manager counts upper ASCII characters as two characters. Therefore, it is possible to inadvertently exceed the assigned string length for an Attribute if characters with umlauts are used. For example, if you have a data type with 32 characters in length and you enter more than 16 upper ASCII characters, you may receive **one** of the following error messages when you attempt to link the folder or document properties with the data type. (IBM PMR 17880; Kofax SPR 30525)

```
DGL3616A: An unexpected SQL error occurred; ICM7015: During an SQL operation in the library server, an unexpected error occurred. For details on the error, from a DB2 command prompt enter DB2?SQLnnnn. (STATE): [LS RC = 7015, SQL RC = -311].
```

Or

```
Release Script Returned -1. Your release script may need to be re-installed.
```

Workaround: Make certain that your data fields are long enough to accept upper ASCII characters.

Releasing Documents Using Ascent Capture Multiple Release Feature

If you are using the Ascent Capture multiple release feature and you are releasing documents to the same destination, the second document will occasionally fail with the following error message. (SPR 30467)

File already exists.

Workaround: Unreject your batch in Quality Control and delete the temporary file from the Release working directory. Process the batch again to release it.

Make Documents Text Searchable Option

If you have enabled the “Make documents text-searchable” option on the General Settings tab and you have not included the ICMBASETEXT part, your document will occasionally fail with the following error message. (SPR 30468)

Release Script Returned -1. Your release script may need to be re-installed.

Workaround: To avoid this problem, make sure that the item type you are releasing contains the ICMBASETEXT part. Additionally, if you are releasing OCR full text or text-searchable documents, verify that the item type also contains the ICMBASETEXT part.

Using the Dynamic Item Types Feature with Child Component Attributes

Due to a limitation with Content Manager, you will not be able to create a child component attribute name that has the same name as another child component attribute in another item type. Therefore, you cannot use the dynamic item types feature with child component attributes. (IBM PMR 65664,756; Kofax SPR 32218)

Dynamic Process

When dynamically assigning a process name at release, you must use the process name. If you attempt to use the process description, you may receive the following error message. (SPR 32215)

The process name length is greater than the maximum length of 32.

Notice that this problem also occurs with Dynamic Item Types.

Workaround: Use the process name when dynamically assigning a process. The process name must match the existing process name in the IBM DB2 Content Manager library server.

Using NULL Values

The cardinality of each set of multiple values entered in each child component attribute must be equal, even if the attribute value is left blank. Therefore, no spaces or empty quotes should appear between the entries to represent a NULL value. If you attempt to use empty quotes between the delimiter for a NULL value, you may receive the following error message. (SPR 32267)

Error in document #1, 0. The value provided for the attribute *<attribute>* is not valid. Please verify that all Ascent Values are correct and try again.

For example, let's say that you need to enter the following multiple values for the child component attributes into the release script:

- "apple" value
- empty or NULL value
- "orange" value
- "pear" value

You would type the following (assuming that you specified a single semi-colon character as the delimiter on the General Settings tab):

```
apple; ;orange; pear
```

Double quotes and spaces will not be interpreted as a NULL value. Therefore, you may receive the above error message depending upon which character is allowed for your item type. For example, if you enter the following in a numeric field, you will receive the above error message:

```
10; "" ; 20; 30  
10; ; 20; 30
```

Workaround: Do not use empty quotes or blank spaces to represent a NULL value when entering multiple values.

Minimum Cardinality Not Met

On the Content Manager backend, you can set the minimum cardinality for a child component. When you set the minimum cardinality equal to zero (the default setting), then you can leave some of the child attributes unlinked. However, if the minimum cardinality is greater than or equal to one, then all the child attributes must be linked. (IBM PMR 67634,756; Kofax SPR 32259)

If the cardinality of each set of multiple values entered for a particular child component is not equal, then the release will fail with the following error message:

The number of child component rows provided is less than the minimum required in the definition of the component type (STATE): [LS RC=7981] one or more required attributes for this document may be missing. Please verify that all Ascent Values are correct and try again.

For demonstration, let's say that you need to enter the following information and you have set the minimum cardinality on the backend to 4.

Table 2. Car Model and Year

Model	Year
Chevrolet	2004
Ford	1998
GM	1987

You will receive the above error message when you attempt to do **one** of the following:

- Do not link any of your child attributes. For example:

Model	
Year	

- Partially link your child attributes. For example (assuming that you specified a single semi-colon character as the delimiter on the General Settings tab):

Model	Chevrolet;;Ford;GM
Year	

- Link your child attributes, but the cardinality does not equal the minimum of 4. For example (assuming that you specified a single semi-colon character as the delimiter on the General Settings tab):

Model	Chevrolet;Ford
Year	2004;1998

The following will succeed.

- You link all your child attributes. For example:

Model	Chevrolet;;Ford;GM
Year	2004;;1998;1987

Workaround: Make sure that the minimum cardinality of each set of multiple values entered in each child component attribute is equal, even if the attribute value is left blank.

Required Child Component Attributes and Minimum Cardinality of Zero

If the minimum cardinality for a child component is equal to zero and one or more of its child attributes are required, Content Manager will allow you to release even if the child attribute values are unlinked or left blank. The release script will not fail as expected. This is due to a problem with IBM Content Manager. (IBM PMR 59297, 756; Kofax SPR 30207)

Workaround: Make sure that the minimum cardinality for a child component is greater than or equal to one. This ensures that all the required and non-required child attributes must be linked. Refer to *Minimum Cardinality Not Met* on page 37.

Appendix A – Data Type Compatibility

The figures in this appendix map Ascent Capture data types to Content Manager data types, and indicate which combinations are valid. For more information about data type compatibility, refer to the Ascent 6.1 Capture Help (Ascent Capture Help keyword: *Data types*).

Ascent Value Data Types

When Ascent Value fields are copied to Content Manager attributes, their data types are converted to Content Manager data types. The following figure lists the supported Ascent Capture batch fields and index fields for the Content Manager attributes.

Ascent Value Data Types	Character	Variable Character	Short Integer	Long Integer	Decimal	Double	Date	Time	Time Stamp
CHAR	✓	✓							✓
DATE	✓	✓					✓		
DECIMAL	✓	✓			✓				
DOUBLE	✓	✓				✓			
FLOAT	✓	✓				✓			
INTEGER	✓	✓		✓					
NUMERIC	✓	✓			✓				
REAL	✓	✓				✓			
SMALLINT	✓	✓	✓						
TIME	✓	✓						✓	
VARCHAR	✓	✓							✓

Figure 12. Ascent Value Data Types

Ascent Capture Values

The following figure lists the Ascent Capture values for Content Manager attributes. For more information about Ascent Capture Values, refer to the Ascent Capture Help (Ascent Capture Help keyword: *Ascent Capture > values*).

Ascent Capture Values	Character	Variable Character	Short Integer	Long Integer	Decimal	Double	Date	Time	Time Stamp
{Batch Creation Date}	SC3	SC3	SC2	SC2	SC2	SC2	✓	SC1	SC2
{Current Date}	SC3	SC3	SC2	SC2	SC2	SC2	✓	SC1	SC2
{Document Count}	SC3	SC3	✓	✓	✓	✓	SC1	SC2	SC2
{First Page Roll Number}	SC3	SC3	✓	✓	✓	✓	SC1	SC2	SC2
All other Ascent Capture Values	SC3	SC3	SC3	SC3	SC3	SC3	SC3	SC3	SC3

Legend

- ✓ Passes Release setup and Release.
- SC1 Special Case 1: The document will release with invalid data.
- SC2 Special Case 2: The document will receive an error at release setup.
- SC3 Special Case 3: If a valid value is entered, the document will release. Otherwise, the document will receive an error at release setup.

Figure 13. Ascent Capture Values

Ascent Capture Text Constants

The following figure lists the supported Content Manager attributes for Ascent Capture text constants.

Ascent Capture Text Constants	Character	Variable Character	Short Integer	Long Integer	Decimal	Double	Date	Time	Time Stamp
Text Constants	SC	SC	SC	SC	SC	SC	SC	SC	SC

SC Special Case: Depends upon the value. For example, if you are releasing a Date value, the release script will expect a Date value.

Figure 14. Ascent Capture Text Constants

Appendix B – Quick Reference for Releasing OCR Full Text Files

The following figure provides a quick reference for setting up the release of OCR full text files to IBM DB2 Content Manager. It lists the following:

- OCR full text options supported by the IBM DB2 Content Manager release script. The options are available from the General Settings tab. Refer to the section *General Settings Tab* on page 28 for a description of the tab.
- Content Manager item type requirements for using the release script's OCR full text options.
- Information about how document parts are stored in Content Manager, based on the selected OCR full text option, the type of documents being released, and the item type.

Refer to the documentation that came with your DB2 Content Manager product for more details about setting up item types in Content Manager.

Release Script Setting	Requires:		Parts are stored as:		
OCR Option	Item Type	Semantic ¹ Type	Ascent Document Part	Part Type ²	Semantic ¹ Type
None	Type: Document	BASE	Images	ICMBASE	BASE (visible)
	Searchable: Makes no difference		eDocuments	ICMBASE ICMBASETEXT ³	BASE (visible)
	Doc Mgmt: Add BASE part type as minimum.		OCR Full Text	Not released	Not released
Release OCR as part of image (image stored as base)	Type: Document	BASE, KofaxOCR	Images	ICMBASE	BASE (visible)
	Searchable: Yes		eDocuments	ICMBASE ICMBASETEXT ³	BASE (visible)
	Doc Mgmt: Add BASE, ICMBASETEXT part type as minimum.		OCR Full Text	ICMBASETEXT	KofaxOCR (not visible)
Release OCR as base (image discarded)	Type: Document	BASE	Images	Not released	Not released
	Searchable: Yes		eDocuments	ICMBASE ICMBASETEXT ³	BASE (visible)
	Doc Mgmt: Add BASE, ICMBASETEXT part type as minimum.		OCR Full Text	ICMBASE	BASE (visible)

Figure 15. OCR Full Text Option Requirements

- 1 BASE is visible via the Content Manager Windows client application.
KofaxOCR is invisible via Content Manager Windows client application.

Note To release OCR as part of the image (image stored as base), the KofaxOCR semantic type must be created on the Content Manager server. Refer to your IBM Content Manager documentation for more information about creating semantic types.

- 2 ICMBASE part is base document. It is not text searchable.
ICMBASETEXT part is text searchable through the IBM Net Search Extender (NSE). NSE is formerly known as the Text Information Extender (TIE) in previous versions.
- 3 eDocuments can also be stored as ICMBASETEXT when the option "Make documents text-searchable" is enabled on the General Settings tab.

Appendix C – Kofax Technical Support

For additional technical information about Kofax products, visit the Kofax Web site at www.kofax.com and select an appropriate option from the Support menu. The Kofax Support pages provide product-specific information, such as current revision levels, the latest drivers and software patches, online documentation and user manuals, updates to product release notes (if any), technical tips, and an extensive searchable knowledgebase.

The Kofax Web site also contains information that describes support options for Kofax products. Please review the site for details about the available support options.

If you are a certified representative from an authorized company, and need to contact Kofax Technical Support, please have the following information available:

- Ascent Capture software version
- IBM DB2 Content Manager release script version
- Operating system and Service Pack version
- Network and client configuration
- Copies of your error log files
- Information about your release script